

Author(s) retain the copyright of this article.

Full Length Research Paper

Evaluation of Myo-inositol Effects upon Frozen-Thawed Bovine Sperm Quality

Verón, Gustavo Luis¹, Paladea, Rocío¹, Bello, Ricardo², Manjon, Ania Antonella¹, Monti, Juan Ignacio³ and Vazquez-Levin, Mónica Hebe^{1,*}

¹Laboratorio de Estudios de Interacción Celular en Reproducción y Cáncer. Instituto de Biología y Medicina Experimental (IBYME), Consejo Nacional de Investigaciones Científicas y Técnicas de Argentina (National Research Council of Argentina; CONICET) – Fundación IBYME (FIBYME), Buenos Aires, Argentina.

²Departamento de Metodología, Estadística y Matemática, Universidad de Tres de Febrero, Sáenz Peña, Buenos Aires, Argentina.

³CIAVT (Cooperativa de Inseminación Artificial de Venado Tuerto). Venado Tuerto Artificial Insemination Center, Venado Tuerto, Santa Fe, Argentina.

Abstract

Accepted 29 April, 2021

Despite great advances in standardization of bovine sperm cryopreservation, frozen-thawed sperm quality is commonly suboptimal. Semen supplementation with various compounds has been addressed to overcome the negative impact of cryopreservation upon sperm quality. While a mild enhancement in human semen parameters was reported after Myo-inositol (MI) supplementation, information is still scarce. This work aimed to evaluate the impact of MI supplementation (2mg/mL) upon sperm quality in frozen-thawed bovine sperm from 9 bulls (breeds: 5 dairy, 4 beef). Evaluations included assessment of total/progressively motile sperm and kinematic parameters (Computer-Assisted Sperm Analysis), sperm vitality, membrane osmotic competence, acrosomal status, chromatin compaction and DNA fragmentation. As a result, an increase ($P<0.05$) in sperm kinematic parameters (VSL, VCL, VAP, LIN, STR, ALH, BCF, WOB and MAD) was found in sperm suspensions after MI supplementation, although total or progressive motility did not significantly increase. Based on the MI Response Index, 3/9 bulls showed >60% improvement in progressive motility, and 6/9 >30% improvement. MI supplementation did not alter sperm vitality, membrane osmotic competence, acrosome status, chromatin compaction and DNA fragmentation. In summary, MI supplementation of frozen-thawed bovine spermatozoa led to a significant improvement in flagellum movement, as evidenced by the increase in sperm kinematics values.

Key words: Bovine, cryopreservation, frozen-thawed, sperm, CASA, Myo-inositol.

INTRODUCTION

Demand for animal-based foods has been increasing worldwide, partly due to technological innovations and structural changes in livestock management. The outlook for the international dairy and beef market shows substantial growth in recent years based on statistical reports of the Food and Agriculture Organization of the United Nations

(FAO, 2020). Specifically, bovine meat production has increased 1.8 million tons between 2016 and 2018 (69.7 to 71.5 million tons), whereas bovine milk has increased 49.9 million tons in the same period (FAO, 2018). Therefore, the production system for bovine cattle aims to produce at least one calf per cow per year using reproductive biotechnologies, such as artificial insemination and semen cryopreservation. This set of techniques allows increasing reproductive efficiency, reflected as a greater livestock production (Palma et al., 2007).

*Corresponding author E-mail: mhvazl@gmail.com;
mhvazquez@ibyme.conicet.gov.ar

Semen cryopreservation allows storage, transport (Grötter et al., 2019), time optimization (Pini et al., 2018), the constant use of breeders with favorable genetic characteristics, and a lower probability of introducing diseases during reproductive management (Bailey et al., 2000). Despite formulations and methodologies standardization for bovine semen cryopreservation, around 40-50% of the sperm population does not survive the process (Curry, 2000; Watson 2000). Cell death is, at least in part, due to changes caused by low temperatures, osmotic imbalances (Sieme et al., 2015), ice crystals formation, oxidative stress, and lipid-protein reorganizations in cellular membranes (Watson 1995; Bailey et al., 2000). In addition, those spermatozoa that remain alive after the freezing-thawing process undergo biochemical and molecular alterations (Pini et al., 2018), mainly reflected by a motility decrease, changes in the plasma membrane, acrosome deterioration and genetic damage (Watson, 2000; Bucak et al., 2010; Ortega Ferrusola et al., 2010), which negatively affect the sperm fertilizing potential. Several attempts have been made to reduce the damage after sperm cryopreservation by modifying the components of the cryopreservation medium. The addition of egg yolk, milk, glycerol, bovine serum albumin, polyvinyl alcohol and liposomes has been reported to mitigate the negative effects generated during sperm freezing (Layek et al., 2016). Some studies reported discrete and heterogeneous results in sperm quality by supplementing semen cryopreservation diluents with lycopene and resveratrol (Bucak et al, 2015) α -linoleic acid (Kaka et al, 2014), arginine and trehalose (Öztürl et al., 2017), cysteine and glutathione (Tuncer et al., 2010), ascorbic acid (Mirzoyan et al., 2006), vitamin E analogs (Peña et al., 2003), ethanol (Dodaran et al., 2015), and natural herbs (Zhao et al., 2009; Daghigh-Kia et al., 2014). On the other hand, semen supplementation after thawing also depicted similar results (i.e. crocin (Sapanidou et al., 2015); melatonin (Pang et al., 2016); MI, caffeine, and pentoxifylline, penicillamine + hypotaurine + epinephrine mixture (Boni et al., 2016); coenzyme Q10+ zinc + D-aspartate mixture (Boni et al., 2016; Barbato et al., 2017); cyclodextrins (Ferré et al., 2018).

Myo-inositol (MI) is a polyalcohol present in the male reproductive tract fluids of humans and other animal species, with levels up to 100 times higher in human seminal plasma than in blood. In recent years, the impact of MI supplementation *in vivo* and *in vitro* upon male infertility treatment has been investigated (Vazquez-Levin and Verón, 2020). In particular, some studies have evaluated the effect of MI supplementation before (Paternostro et al., 2015; Saleh et al., 2017) and after (Palmieri et al., 2016) sperm cryopreservation, showing an increase in sperm motility in MI-treated samples. Nevertheless, information on MI effect on bovine semen sperm quality is still scarce. Two previous studies reported MI supplementation before (Bucak et al., 2010)

and after (Boni et al., 2016) bovine semen cryopreservation. In the first case, Bucak and collaborators reported an increase in sperm motility after supplementing the freezing medium with 7.5mM MI (Bucak et al., 2010). On the other hand, Boni and collaborators assessed the impact of 1.8 mg/mLMI supplementation upon sperm quality using frozen-thawed bovine semen; samples were devoid of the cryoprotectant, pooled, and supplemented with MI, resulting in a higher sperm motility and kinematics after 4 hours.

Based on these findings, the present study aimed to evaluate the effect of MI supplementation (2mg/mL) upon in frozen-thawed bovine sperm quality by assessing sperm motility, vigor, and a set of kinematic parameters, as well as sperm vitality, membrane osmotic competence, acrosomal and nuclear status.

MATERIALS AND METHODS

Reagents

All reagents were purchased from Sigma Chemical Co. (St. Louis, MO, USA), unless otherwise noted. All procedures were performed following international biosafety standards for the operators and the environment.

Biological Samples

Semen samples from 9 breeding bulls, 5 of the Holstein dairy breed (bulls 1, 3, 4, 7, 8), and 4 of the Brangus and Braford beef breeds (Brangus: bulls 2, 5, 6; Braford: bull 9) were kindly provided by the Venado Tuerto Artificial Insemination Center (CIAVT; Santa Fe, Argentina). Semen samples were processed using the commercial reagent AndroMed[®] (containing phospholipids, citric acid, sugars, antioxidants, glycerol, and antibiotics in TRIS buffer; Minitube; Tiefenbach, Germany) following the protocol suggested by the manufacturer, loaded in 0.5 mL straws and subjected to cryopreservation using a standard procedure. In all cases, samples were transferred to the IBYME laboratory in a liquid nitrogen tank until analysis.

MI Supplementation

Frozen semen samples were thawed at 37°C for 30 sec in water baths. Each straw was divided in 3 aliquots (Thawing Control, MI treatment, and Placebo Treatment). The Thawing Control aliquot was used to assess sperm concentration, vitality, and morphology, and initial sperm motility and kinematics. MI and Placebo Treatment (Control) aliquots were incubated for 1 h at room temperature with 2 mg/mL of MI or physiological solution, respectively. At the end of the incubation, sperm motility, kinematics, vitality, plasma membrane osmotic competence, acrosome (intact or reacted) and nucleus (chromatin

condensation and DNA fragmentation) status were assessed. All evaluations were done in triplicates (except for motility and kinematics assessment, which were performed in 5 replicates) and by two operators to increase quality and reliability.

Routine and Functional Sperm Parameters Assessment

Sperm Motility and Kinematics

One second videos were obtained from at least 5 fields per sample at a rate of 30 frames per second (FPS) using the Proiser ISAS v1. (BIO-OPTIC, S.R.L.) CASA system containing a heated stage set at 37°C. The system provides objective sperm motility parameters: straight-line velocity (VSL), curvilinear velocity (VCL), average path velocity (VAP), linearity (LIN), straightness (STR), beat cross frequency (BCF), wobble (WOB), amplitude of lateral head displacement (ALH), and mean angular displacement (MAD). Total and progressive sperm motility, as well as vigor was subjectively evaluated using videos registered with a CASA system. Vigor, a measure of the rectilinear progressive movement intensity, was rated following the Salisbury criteria (Salisbury and Van Demark, 1961) on a scale of 1 to 5, 5 being the most vigorous. At least 200 spermatozoa were recorded in each condition. Frozen-thawed sperm suspensions were considered normal for motility and vigor with a $\geq 30\%$ progressive motility and ≥ 3 vigor. Considering the heterogeneity in motility values among samples from the same bull, the rate of change (ΔPM) was estimated. This parameter was defined as the change in progressive motility between control and treated samples ($\Delta PM = PM_{MI} - PM_C$). Next, a response index (RI) was estimated as the ratio between ΔPM and control progressive motility ($RI = \Delta PM / PM_C$). Therefore, samples were classified according to no ($RI \leq 0$), low ($0 < RI \leq 0.3$), medium ($0.3 < RI \leq 0.6$), or high ($RI \geq 0.6$) responses.

Sperm Morphology

Sperm suspensions were fixed using 4% paraformaldehyde (PFA). Fixed sperm were incubated with 0.6% Giemsa solution in methanol (Biopack, Buenos Aires-Argentina) for 1 h. Normal sperm morphology was assessed considering head, acrosome, midpiece and flagellum abnormalities. At least 200 sperm were evaluated per sample, and samples were considered morphologically normal with $\geq 70\%$ spermatozoa with normal morphology (Rutter and Russo, 2006).

Sperm Vitality and Osmotic Competence of the Plasma Membrane

Sperm vitality was assessed by means of 0.5% Eosin Y staining and considered normal with $\geq 50\%$ live spermatozoa (Watson, 2000). Osmotic competence was assessed by means of the hypo-osmotic swelling (HOS) test. Briefly, sperm suspensions were incubated with 150 mOsm/mL hypoosmotic solution (28.5 mM sodium citrate, 75 mM fructose in distilled water) in a 1:10 ratio (semen:

hypoosmotic solution) for 30 min at 37°C. At least 200 spermatozoa were counted per sample. Samples were considered osmotically competent with $\geq 35\%$ HOS test scores (Padrik et al., 2012).

Sperm Acrosomal Status

PFA-fixed sperm were stained using 0.22% Coomassie Brilliant Blue-G in 50% methanol and 10% acetic acid for 2 min. At least 200 spermatozoa were evaluated per sample. Samples were considered normal for acrosomal status with $\geq 50\%$ acrosome intact spermatozoa (Bernardi et al., 2011).

Sperm Chromatin Condensation

Spermatozoa were fixed and permeabilized with methanol (J.T. Baker, Xalostoc, México) at 4°C for 3 min, and stained using 5% aniline blue (Biopack, Buenos Aires, Argentina) in 10% glacial acetic acid for 7 min. Sperm chromatin condensation was assessed under light microscopy at 1000X magnification, and at least 200 spermatozoa were evaluated per condition. Samples were considered normal for chromatin condensation with $\geq 90\%$ spermatozoa with condensed chromatin (Khalifa et al., 2008).

Sperm DNA Fragmentation

Sperm DNA fragmentation was performed by means of the commercial In Situ Cell Death Detection Kit (Roche; Basel, Switzerland) using samples from high performance and subfertile bulls (bulls 2 and 4, respectively). Briefly, sperm suspensions were fixed using 2% formaldehyde for 4 min at room temperature. Fixed samples were loaded onto glass slides and permeabilized using 0.1% Triton X-100 in 0.1% sodium citrate) for 2 min at 4°C. Next, permeabilized sperm were stained using TUNEL (Terminal deoxynucleotidyl Transferase UTP Nick End Labeling) solution and counterstained with propidium iodide. Negative (no TUNEL solution), and positive (DNase I-treated samples) controls were added for each condition. DNA fragmentation was determined in at least 300 spermatozoa. Samples were considered normal for DNA fragmentation with $\leq 8\%$ spermatozoa with fragmented DNA (Takeda et al., 2015).

Statistical Analysis

Results were expressed as Mean \pm Standard Error of the Mean (SEM), unless otherwise stated. Mann-Whitney or Wilcoxon tests were used to compare results between groups for paired (control versus MI-treated samples) or unpaired samples (beef versus dairy breed samples). Chi-squared test was used to compare results between groups when considering rates. All evaluations were performed using GraphPad InStat (GraphPad Software; California, United States). Differences between groups were considered statistically significant at $P < 0.05$.

Table 1. Semen characteristics in frozen-thawed spermatozoa. Sperm concentration, total and progressive motility, vigor, vitality, osmotic competence, normal morphology, acrosome status and chromatin compaction for dairy and beef bull semen samples. Results are expressed as mean \pm standard error of the mean.

Bull	Breed	Concentration (million/mL)	Total Motility (%)	Progressive Motility (%)	Vigor
1	Dairy	68.8 \pm 3.6	59.7 \pm 6.1	59.3 \pm 6.1	3.8 \pm 0.2
2	Beef	47.0 \pm 3.7	61.4 \pm 4.3	60.3 \pm 4.7	3.8 \pm 0.2
3	Dairy	48.2 \pm 7.1	26.5 \pm 4.0	22.6 \pm 3.9	2.6 \pm 0.2
4	Dairy	38.6 \pm 1.4	62.5 \pm 3.0	58.6 \pm 3.2	3.4 \pm 0.2
5	Beef	41.2 \pm 8.6	50.5 \pm 2.8	47.5 \pm 3.4	3.4 \pm 0.2
6	Beef	73.4 \pm 3.7	34.5 \pm 3.4	24.2 \pm 5.5	3.2 \pm 0.4
7	Dairy	49.4 \pm 4.0	50.1 \pm 6.7	47.6 \pm 7.0	3.2 \pm 0.4
8	Dairy	31.2 \pm 2.7	47.7 \pm 4.2	46.6 \pm 4.1	3.8 \pm 0.2
9	Beef	48.2 \pm 7.1	40.9 \pm 3.2	36.2 \pm 4.1	3.0 \pm 0.4

Table 1 (cont).

Bull	Vitality (%)	Osmotic Competence (%)	Normal Morphology (%)	Acrosome Status (%)	Chromatin Compaction (%)
1	55.5 \pm 4.1	52.9 \pm 7.3	88.2	95.8 \pm 1.5	97.5 \pm 0.3
2	61.2 \pm 2.6	54.9 \pm 13.1	33.5	85.4 \pm 3.9	93.5 \pm 0.9
3	69.3 \pm 14.4	17.5 \pm 3.6	66.1	93.5 \pm 0.7	97.8 \pm 0.6
4	76.1 \pm 1.1	48.7 \pm 2.8	94.8	88.8 \pm 10.2	98.2 \pm 0.4
5	48.0 \pm 1.8	38.1 \pm 3.2	91.6	88.0 \pm 4.7	98.5 \pm 0.5
6	37.2 \pm 2.0	16.1 \pm 1.6	76.0	94.1 \pm 0.4	97.7 \pm 0.2
7	64.1 \pm 7.7	37.0 \pm 7.4	79.4	84.6 \pm 3.7	98.4 \pm 0.4
8	40.9 \pm 5.1	42.4 \pm 7.6	85.8	90.4 \pm 2.9	97.7 \pm 0.1
9	75.9 \pm 1.6	48.1 \pm 3.6	84.2	86.7 \pm 3.9	97.9 \pm 1.1

RESULTS

Comparison between Dairy and Beef Breeds Sperm Quality

Frozen-thawed semen samples from 9 bulls were analyzed for sperm concentration, motility, vigor, morphology, vitality, osmotic competence, acrosomal status and chromatin compaction (Table 1). Sperm concentration was similar for dairy (47.24 \pm 14.16 million/mL; range: 31.20-68.8) and beef (52.45 \pm 14.30 million/mL; range: 41.20-73.40) bull semen samples ($P=0.81$; Mann-Whitney test). Sperm motility, vigor, morphology, vitality, osmotic competence, acrosomal status and chromatin compaction were found within normal values in most cases, and no differences were found between dairy and beef bull samples (Table 1; $P>0.05$; Mann-Whitney test).

Effect of MI Supplementation Upon Sperm Quality

Sperm Motility and Vigor

A variable response among bulls was recorded after MI supplementation (Figures 1-2). When considering the breed, at least 40% of the dairy breed bull samples supplemented with MI showed a trend toward higher total and progressive sperm motility, whereas the beef breeds bull samples depicted a trend towards a motility improvement in at least 20% of the cases (Table 2). Similarly, sperm vigor depicted similar values between control and MI-treated samples (Wilcoxon test; Table 3). Next, the proportion of total and progressively motile spermatozoa was estimated for each bull by calculating the ratio between the number of motile sperm (total or progressive) and the total number of sperm evaluated

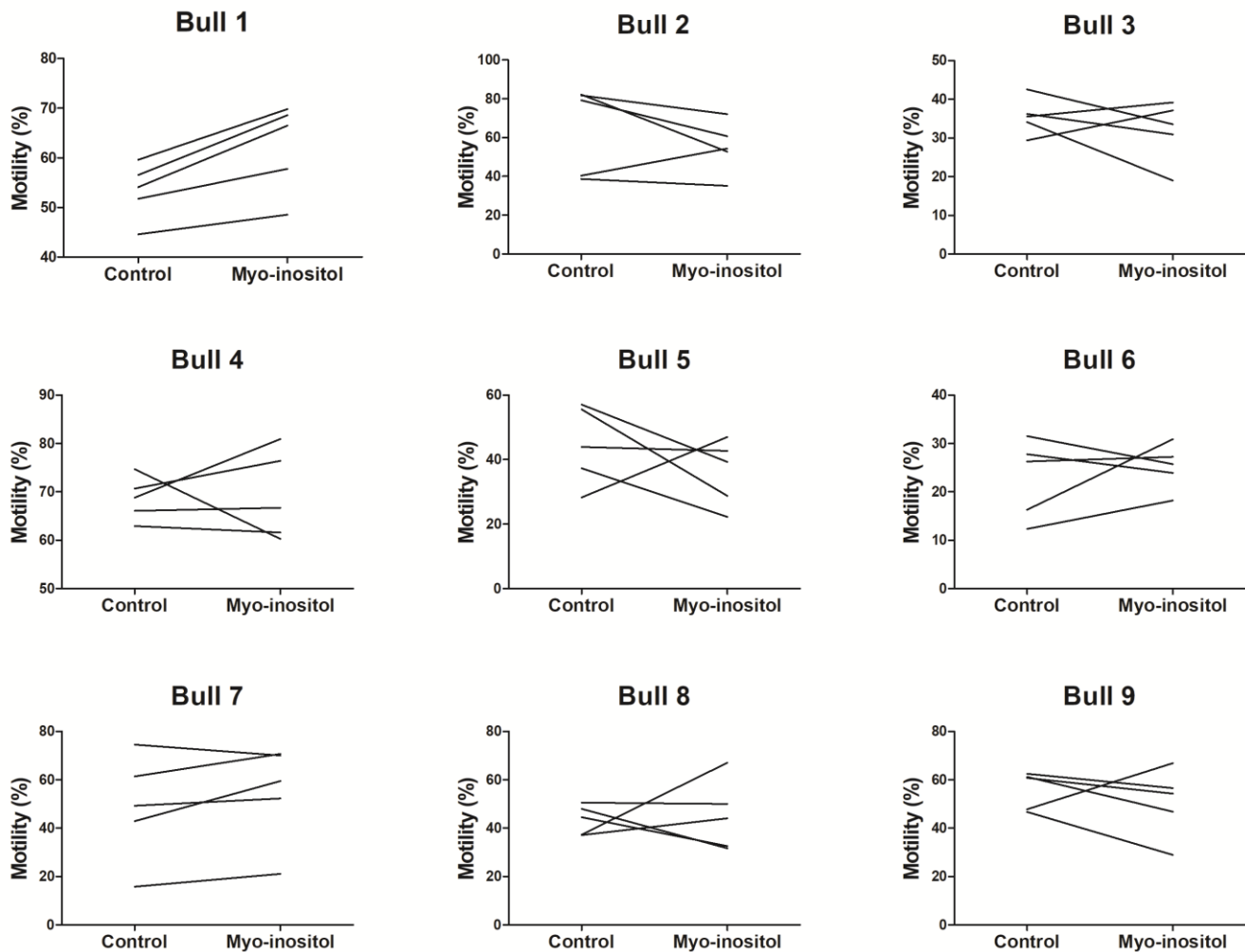


Figure 1. Effect of Myo-inositol supplementation upon total sperm motility in frozen-thawed bovine semen samples. Total sperm motility depicted a mixed response to Myo-inositol supplementation among different bull samples and among the same bull straws. Results are expressed as total motility (%), and each line corresponds to the same straw subjected to control or Myo-inositol supplementation.

for all straws. This analysis revealed a significant increase in total motility in 4 bulls (bulls 1, 6, 7 and 8) and a decrease in 3 bulls (bulls 2, 5 and 9) (Chi-squared test; Table 4).

Considering the response index (RI), samples were classified according to no ($RI \leq 0$), low ($0 < RI \leq 0.3$), medium ($0.3 < RI \leq 0.6$), or high ($RI \geq 0.6$) responses. As a result, a MI response was determined in at least one sample per animal. Moreover, samples from one third of the bulls depicted a high response; samples from other third up to a medium response; and samples from the last third up to a low response (Figure 3).

Sperm Kinematics

Sperm kinematics was found significantly improved in MI-treated samples when compared to controls (Tables 5-6).

Specifically, a significant increase in VCL, and VAP was found in 100% (9/9) of bull samples. Moreover, VSL and LIN were significantly higher in 89% (8/9) of bull samples. Finally, STR, BCF and WOB values were significantly higher in 78% (7/9) of the bull semen samples. Results are presented according to the increase/decrease (Table 5) or mean values (Table 6). The increase in sperm kinematics was significant in samples from both breeds.

Sperm Vitality, Osmotic Competence, Acrosomal Status and Chromatin Condensation

MI supplementation did not exert a significant effect on sperm vitality, osmotic competence of the plasma membrane (Table 7), or acrosomal status when compared to controls (Table 8). Likewise, similar values were

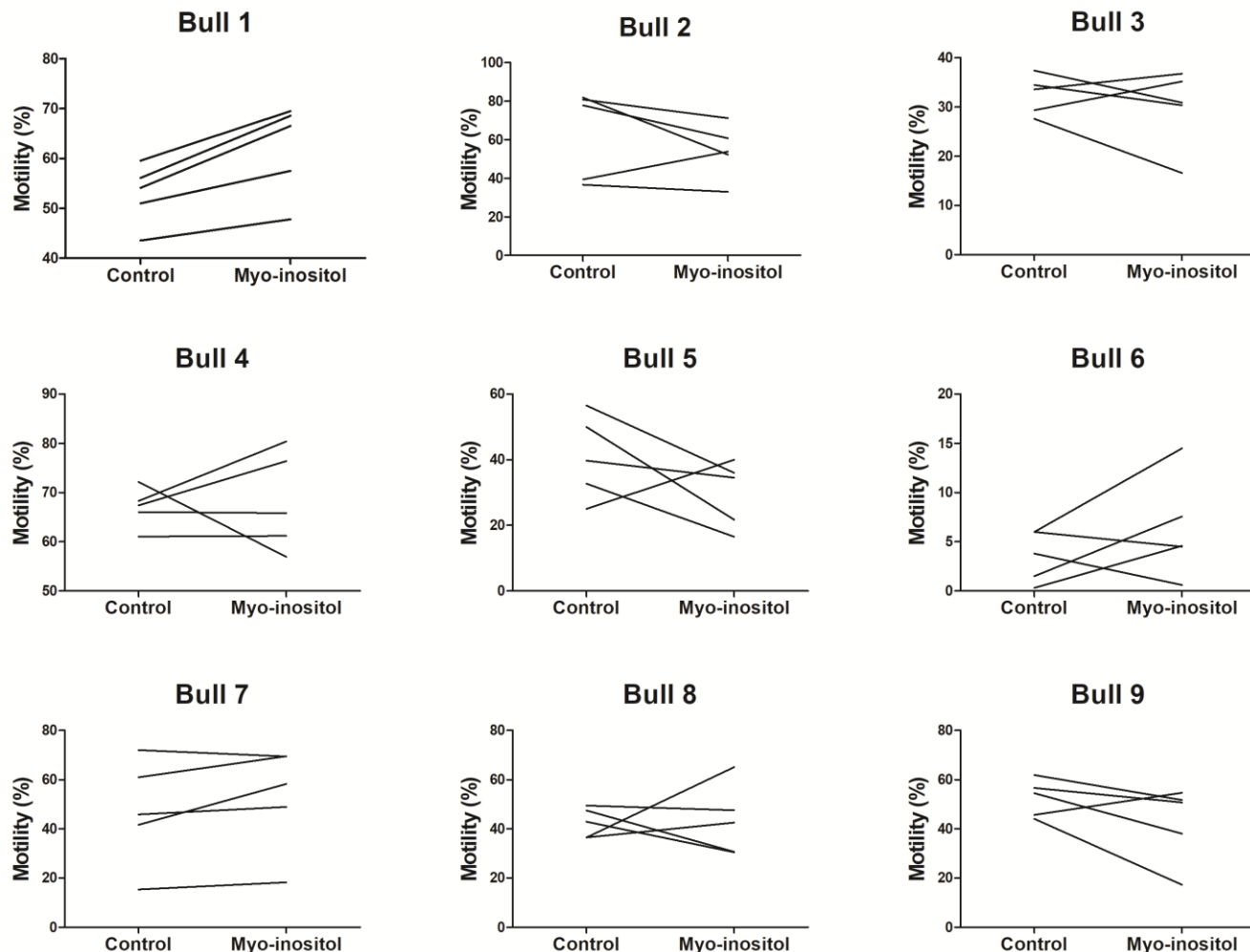


Figure 2. Effect of Myo-inositol supplementation upon progressive sperm motility in frozen-thawed bovine semen samples. Progressive sperm motility depicted a mixed response to Myo-inositol supplementation among different bull samples and among the same bull straws. Results are expressed as progressive motility (%), and each line corresponds to the same straw subjected to control or Myo-inositol supplementation.

observed for chromatin condensation between control and MI-treated samples (Table 9).

DNA Fragmentation

DNA fragmentation was determined by means of the TUNEL assay using samples from one high performance and one subfertile bull (bulls 2 and 4, respectively). As a result, a significant difference in DNA fragmentation was determined between bulls 2 and 4 ($22.2 \pm 2.4\%$ vs. $1.8 \pm 0.6\%$; $P < 0.0001$; Mann-Whitney test). MI supplementation did not exert a significant effect upon DNA fragmentation, as depicted by similar DNA fragmentation between control and MI-treated samples for both bulls (Wilcoxon test; Figure 4).

DISCUSSION

The present study aimed to characterize the impact of MI

supplementation on frozen-thawed bull sperm quality. MI was selected based on the results of studies using human semen (Condorelli et al., 2011, 2012; Calogero et al., 2015; Capece et al., 2016; Gulino et al., 2016; Montanino et al., 2016; Palmieri et al., 2016; Park et al., 2016; Scarselli et al., 2016; Artini et al., 2017; Dinkova et al., 2017; Canepa et al., 2018), as well as some evidence obtained on its use in bovine semen (Bucak et al., 2010; Boni et al., 2016). The study population consisted of 9 bulls, 5 from the dairy breed and 4 from beef breeds. A set of parameters related to sperm functionality were evaluated, namely sperm motility, vigor, vitality, osmotic competence of the plasma membrane, acrosomal and chromatin/DNA status. Frozen-thawed semen samples from most bulls (7/9) presented normal values (CIAVT standards: at least 30% progressive motility and 70% normal morphology; 6 million progressively motile spermatozoa per dose) (Salisbury and Van Demark, 1961; Watson, 2000; Rutter and Russo, 2006; Khalifa et

Table 2. Effect of Myo-inositol supplementation on total and progressive sperm motility (percentage). Sperm total and progressive motility depicted similar results in control and Myo-inositol-treated frozen-thawed bovine semen samples. Results are expressed as mean \pm standard error of the mean ($n = 5$ straws per animal).

Bull	Total motility (%)			Progressive motility (%)		
	Control	Myo-inositol	Wilcoxon test <i>P</i> -value	Control	Myo-inositol	Wilcoxon test <i>P</i> -value
1	53.3 \pm 2.54	62.2 \pm 4.0	0.0625	52.9 \pm 2.7	62.0 \pm 4.1	0.0625
2	64.4 \pm 10.2	55.0 \pm 6.0	0.3125	63.3 \pm 10.4	54.2 \pm 6.3	0.3125
3	35.7 \pm 2.3	31.9 \pm 3.5	0.4375	32.5 \pm 1.8	30.0 \pm 3.6	0.4375
4	68.6 \pm 2.0	69.2 \pm 4.1	1.0000	67.0 \pm 1.8	68.1 \pm 4.5	1.0000
5	44.4 \pm 5.4	36.0 \pm 4.6	0.4375	40.8 \pm 5.7	29.7 \pm 4.5	0.1875
6	22.8 \pm 3.6	25.2 \pm 2.1	0.6250	3.5 \pm 1.2	6.4 \pm 2.3	0.3125
7	48.8 \pm 9.9	54.7 \pm 9.1	0.1875	47.2 \pm 9.6	52.9 \pm 9.5	0.1250
8	43.5 \pm 2.7	45.0 \pm 6.5	1.0000	42.6 \pm 2.7	43.3 \pm 6.4	1.0000
9	55.8 \pm 3.5	50.7 \pm 6.3	0.6250	52.6 \pm 3.4	42.5 \pm 6.9	0.1875

Table 3. Effect of Myo-inositol supplementation on sperm vigor. Sperm vigor depicted similar values between control and Myo-inositol-treated samples. Results are expressed as mean \pm standard error of the mean ($n = 5$ straws per bull).

Bull	Vigor		
	Control	Myo-inositol	Wilcoxon test <i>P</i> -value
1	3.8 \pm 0.2	3.8 \pm 0.2	1.0000
2	3.8 \pm 0.2	3.8 \pm 0.2	1.0000
3	3.4 \pm 0.4	3.4 \pm 0.4	1.0000
4	3.6 \pm 0.4	3.8 \pm 0.2	0.3458
5	2.8 \pm 0.5	3.2 \pm 0.4	1.0000
6	1.2 \pm 0.2	1.2 \pm 0.2	1.0000
7	3.6 \pm 0.2	3.8 \pm 0.2	1.0000
8	3.8 \pm 0.2	3.8 \pm 0.2	1.0000
9	3.2 \pm 0.2	2.8 \pm 0.2	1.0000

Table 4. Effect of Myo-inositol upon total and progressive motility (rates). Sperm total and progressive motility was significantly different in Myo-inositol-treated samples when compared to the controls. Results are expressed as motility rates ($n = 5$ straws per animal).

Bull	Total Sperm motility			Progressive Sperm Motility		
	Control	Myo-inositol	Chi-squared test <i>P</i> -value	Control	Myo-inositol	Chi-squared test <i>P</i> -value
1	0.53	0.63	<0.0001	0.53	0.63	<0.0001
2	0.65	0.55	<0.0001	0.66	0.55	<0.0001
3	0.35	0.32	0.1929	0.33	0.30	0.2533
4	0.67	0.68	0.6435	0.67	0.68	0.6435
5	0.44	0.38	0.0032	0.41	0.31	<0.0001
6	0.22	0.25	0.0496	0.03	0.07	0.0003
7	0.47	0.53	0.0068	0.46	0.52	0.0122
8	0.44	0.49	0.0182	0.41	0.44	0.1100
9	0.55	0.49	0.0104	0.51	0.40	<0.0001

al., 2008; Bernardi et al., 2011; Padrik et al., 2012; Takeda et al., 2015; Gliozzi et al., 2017). Noteworthy, total and progressive sperm motility ranged between 27-63% and 23-60%, respectively; as opposed to previous

reports on MI supplementation using a cohort of frozen-thawed semen samples with high total and progressive sperm motility (>70% and >60%, respectively; Boni et al., 2016). In addition, while in the present study the cryopreser

Response Index After Myo-inositol Supplementation

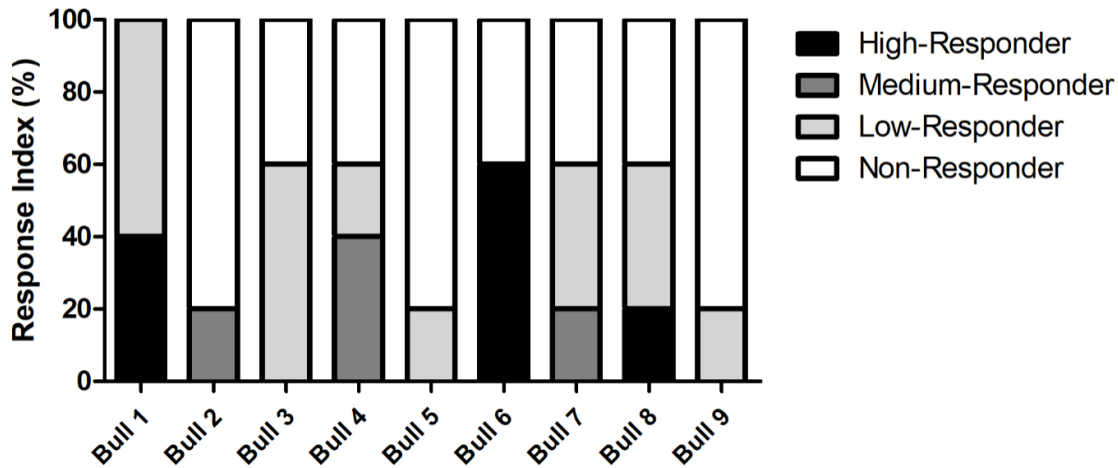


Figure 3. Sperm Response Index to Myo-inositol supplementation. Samples were classified according to no (Response Index; $RI \leq 0$), low ($0 < RI \leq 0.3$), medium ($0.3 < RI \leq 0.6$), or high ($RI \geq 0.6$) responses. A Myo-inositol response was determined for at least one sample per animal.

Table 5. Effect of MI supplementation on sperm kinematic parameters. Sperm kinematics were found significantly altered between control and Myo-inositol-treated samples. \uparrow : Increase; \downarrow : Decrease ($P < 0.005$; Mann-Whitney test); ns: not significant.

Bull	VCL ($\mu\text{m/s}$)	VSL ($\mu\text{m/s}$)	VAP ($\mu\text{m/s}$)	LIN (%)	STR (%)	ALH (μm)	BCF (Hz)	WOB (%)	MAD (Degrees)
1	\uparrow	ns	\uparrow	\downarrow	\downarrow	\uparrow	ns	\downarrow	\uparrow
2	\uparrow	\uparrow	\uparrow	\uparrow	\downarrow	\uparrow	\uparrow	\downarrow	ns
3	\uparrow	\uparrow	\uparrow	\uparrow	\uparrow	\uparrow	\uparrow	\uparrow	ns
4	\uparrow	\uparrow	\uparrow	\uparrow	\uparrow	\uparrow	\uparrow	\uparrow	ns
5	\uparrow	\uparrow	\uparrow	\uparrow	\uparrow	\uparrow	\uparrow	\uparrow	ns
6	\uparrow	\uparrow	\uparrow	\uparrow	\uparrow	\uparrow	\uparrow	ns	ns
7	\uparrow	\uparrow	\uparrow	\uparrow	ns	ns	ns	\uparrow	ns
8	\uparrow	\uparrow	\uparrow	\uparrow	\uparrow	\uparrow	\uparrow	\uparrow	ns
9	\uparrow	\uparrow	\uparrow	\uparrow	\uparrow	ns	\uparrow	\uparrow	\downarrow
\uparrow	9/9	8/9	9/9	8/9	7/9	7/9	7/9	7/9	1/9

vation agent was left during the 1h-incubation with MI, it was removed prior to MI supplementation in the other study.

MI supplementation of frozen-thawed bovine semen samples using 2 mg/mL of MI resulted in a 10% increase in sperm motility in semen samples of 4/9 bulls studied, and a 10% decrease in samples of 3/9 bulls, accompanied by similar results for progressive motility, as reported in studies using fresh human semen samples (Condorelli et al., 2011; Artini et al., 2017). On the other hand, studies using frozen-thawed human semen ($n = 25$; 15 min incubation with 3.2 mg/mL MI) reported a 5% increase in progressive motility (Palmieri et al., 2016). In contrast, no differences were found by Boni et al. (2016) in total sperm motility after 1 h of MI incubation in bulls,

accompanied by a significant decrease in progressive motility. In this sense, evaluating individual samples instead of a pool revealed differences along individual initial motility, which may affect the outcome, as reported for human samples (Artini et al., 2017).

The use of a cohort of 9 bulls of beef and dairy breeds and 5 semen replicates of each bull led to the identification of a variable behavior among bull semen samples as well as within replicates of the same bull, when comparing total and progressive sperm motility before and after 1h incubation with MI. Part of these differences maybe associated to several biophysical and biochemical factors that are known to impact in sperm performance after freezing/thawing procedures, among them reorganization and/or loss of sperm membrane lipids

Table 6. Sperm kinematics in control and Myo-inositol-treated frozen-thawed bovine semen samples. Sperm kinematics were found significantly altered between control and Myo-inositol-treated samples. Results are expressed as mean \pm standard error of the mean ($n = 5$ straws per bull). * $P < 0.05$; ** $P < 0.005$; *** $P < 0.0005$ (Mann-Whitney test).

Bull	VCL ($\mu\text{m/s}$)		VSL ($\mu\text{m/s}$)		VAP ($\mu\text{m/s}$)	
	Control	Myo-inositol	Control	Myo-inositol	Control	Myo-inositol
1	157.80 \pm 2.57	176.70 \pm 1.95 ***	73.63 \pm 1.88	75.32 \pm 1.55	84.27 \pm 1.60	90.12 \pm 1.28 **
2	137.00 \pm 2.18	178.20 \pm 2.46 ***	81.21 \pm 1.95	112.80 \pm 2.50 ***	89.79 \pm 1.72	111.60 \pm 1.78 ***
3	127.30 \pm 2.95	168.90 \pm 3.51 ***	53.53 \pm 1.80	81.26 \pm 2.57 ***	66.77 \pm 1.81	87.64 \pm 2.11 ***
4	166.20 \pm 2.51	212.10 \pm 2.65 ***	71.40 \pm 1.66	108.00 \pm 2.44 ***	87.27 \pm 1.57	116.90 \pm 1.78 ***
5	120.60 \pm 2.56	155.40 \pm 4.15 ***	61.12 \pm 1.88	90.68 \pm 3.15 ***	69.66 \pm 1.72	94.53 \pm 2.74 ***
6	59.30 \pm 1.78	81.91 \pm 2.07 ***	20.08 \pm 0.93	29.24 \pm 1.36 ***	27.13 \pm 1.04	37.06 \pm 1.23 ***
7	149.30 \pm 2.67	158.50 \pm 3.27 *	74.60 \pm 1.99	86.40 \pm 2.75 **	84.72 \pm 1.81	92.63 \pm 2.19 **
8	169.00 \pm 4.69	213.80 \pm 3.73 ***	89.96 \pm 3.67	134.10 \pm 4.74 ***	92.91 \pm 2.97	117.50 \pm 2.96 ***
9	101.60 \pm 1.81	108.40 \pm 2.43 *	55.58 \pm 1.49	64.76 \pm 1.95 ***	63.52 \pm 1.36	70.30 \pm 1.76 ***

Table 6 (cont.)

Bull	LIN (%)		STR (%)		ALH (μm)	
	Control	Myo-inositol	Control	Myo-inositol	Control	Myo-inositol
1	47.23 \pm 0.87	42.97 \pm 0.66 ***	75.50 \pm 0.97	71.11 \pm 0.79 ***	5.33 \pm 0.09	5.94 \pm 0.07 ***
2	55.98 \pm 0.94	63.88 \pm 0.99 ***	80.8 \pm 0.8	84.09 \pm 1.02 ***	4.02 \pm 0.06	4.73 \pm 0.09 ***
3	40.62 \pm 0.94	49.29 \pm 1.18 ***	73.27 \pm 1.12	80.38 \pm 1.28 ***	4.71 \pm 0.10	5.42 \pm 0.14 ***
4	41.69 \pm 0.68	50.94 \pm 0.80 ***	70.89 \pm 0.79	77.6 \pm 0.91 ***	5.70 \pm 0.08	6.34 \pm 0.10 ***
5	48.29 \pm 1.01	58.44 \pm 1.36 ***	78.14 \pm 1.09	86.66 \pm 1.28 ***	4.39 \pm 0.08	4.97 \pm 0.13 ***
6	31.24 \pm 1.21	35.52 \pm 1.28 *	66.16 \pm 1.83	72.46 \pm 1.70 *	3.03 \pm 0.09	3.83 \pm 0.10 ***
7	48.00 \pm 0.87	51.70 \pm 1.08 **	80.11 \pm 0.96	82.00 \pm 1.09	5.09 \pm 0.09	5.07 \pm 0.11
8	50.60 \pm 1.11	60.40 \pm 1.19 ***	77.46 \pm 1.19	79.84 \pm 30.42 ***	4.95 \pm 0.12	5.37 \pm 0.13 **
9	50.99 \pm 0.84	58.72 \pm 1.08 ***	78.49 \pm 0.87	86.42 \pm 0.98 ***	3.74 \pm 0.06	3.80 \pm 0.09

Table 6 (cont.)

Bull	BCF (Hz)		WOB (%)		MAD (degrees)	
	Control	Myo-inositol	Control	Myo-inositol	Control	Myo-inositol
1	7.61 \pm 0.14	7.88 \pm 0.12	54.18 \pm 0.63	51.21 \pm 0.47 ***	106.20 \pm 1.42	113.90 \pm 1.12 ***
2	9.28 \pm 0.15	10.49 \pm 0.18 ***	64.06 \pm 0.64	65.20 \pm 0.80 *	105.50 \pm 1.72	103.60 \pm 2.09
3	8.38 \pm 0.19	9.43 \pm 0.24 ***	51.73 \pm 0.70	53.90 \pm 0.93 *	121.20 \pm 1.52	117.80 \pm 2.22
4	7.60 \pm 0.11	9.15 \pm 0.16 ***	52.11 \pm 0.49	56.47 \pm 0.61 ***	114.50 \pm 1.09	113.70 \pm 1.55
5	8.42 \pm 0.17	9.94 \pm 0.25 ***	56.78 \pm 0.70	61.84 \pm 1.03 ***	111.20 \pm 1.59	113.00 \pm 2.79
6	5.09 \pm 0.21	6.45 \pm 0.22 ***	43.35 \pm 1.29	45.46 \pm 0.98	106.20 \pm 1.90	107.10 \pm 2.01
7	9.93 \pm 0.16	10.23 \pm 0.22	55.86 \pm 0.59	58.38 \pm 0.73 **	119.00 \pm 1.56	120.30 \pm 2.22
8	7.84 \pm 0.20	9.08 \pm 0.23 ***	55.39 \pm 0.86	56.79 \pm 1.05 *	109.40 \pm 1.95	112.10 \pm 2.53
9	8.57 \pm 0.14	9.61 \pm 0.20 ***	61.02 \pm 0.58	64.94 \pm 0.77 ***	110.90 \pm 1.48	103.90 \pm 2.16 ***

and proteins, as well as distinctive responses to osmotic changes, cooling, cold shock, ice oxidative stress and addition of cryoprotective agents, as recently summarized (Grötter et al, 2019). In particular, studies have previously shown differences in sperm membrane permeability to water and glycerol (Chaveiro et al., 2006), and in sperm and seminal plasma protein composition (Rego et al., 2016; Gomez et al., 2020) that may explain heterogeneity

in sperm response to MI treatment. Moreover, initial endogenous MI concentration may also play an important role, since it was found significantly lower in seminal fluids of oligozoospermic patients when compared to normozoospermic ones (Murgia et al., 2020). Given the heterogeneity in sperm motility among samples, a response index (RI) to MI supplementation was assessed. As a result, a high RI was determined for one

Table 7. Effect of Myo-inositol supplementation on Sperm Vitality and Osmotic Competence. Sperm vitality and plasma membrane osmotic competence depicted similar results between control and Myo-inositol-treated frozen-thawed bovine semen samples. Results are expressed as mean \pm standard error of the mean ($n = 5$ straws per animal).

Bull	Sperm Vitality (%)			Sperm Osmotic Competence (%)		
	Control	Myo-inositol	Wilcoxon Test <i>P</i> -value	Control	Myo-inositol	Wilcoxon Test <i>P</i> -value
1	56.4 \pm 4.4	57.2 \pm 5.5	1.0000	35.2 \pm 3.1	36.8 \pm 1.9	1.0000
2	51.3 \pm 6.8	55.3 \pm 3.5	0.2500	60.8 \pm 6.6	57.7 \pm 5.3	0.1736
3	57.0 \pm 4.9	54.8 \pm 3.7	0.1000	17.5 \pm 0.9	18.9 \pm 3.2	0.1000
4	69.5 \pm 1.1	69.8 \pm 2.5	1.0000	50.3 \pm 4.8	47.3 \pm 7.6	1.0000
5	43.1 \pm 2.3	51.3 \pm 6.3	0.5000	23.43 \pm 6.1	27.7 \pm 6.7	0.5000
6	26.7 \pm 1.7	26.4 \pm 5.4	0.7500	15.9 \pm 3.4	7.7 \pm 3.1	0.1736
7	58.0 \pm 4.5	48.4 \pm 3.7	0.5000	27.7 \pm 4.8	29.8 \pm 0.9	1.0000
8	39.3 \pm 3.6	48.8 \pm 1.4	0.7500	48.3 \pm 5.7	53.5 \pm 3.5	0.2500
9	76.5 \pm 2.6	68.7 \pm 5.5	0.2500	46.8 \pm 2.0	45.8 \pm 2.9	1.0000

Table 8. Effect of Myo-inositol supplementation on Acrosomal Status. Sperm acrosomal status depicted similar results between control and Myo-inositol-treated frozen-thawed bovine semen samples. Results are expressed as mean \pm standard error of the mean ($n = 5$ straws per animal).

Bull	Acrosomal Status (%)		
	Control	Myo-inositol	Wilcoxon Test <i>P</i> -value
1	92.2 \pm 2.0	93.3 \pm 1.5	0.5000
2	83.6 \pm 2.5	80.0 \pm 6.4	0.5000
3	90.4 \pm 3.2	86.8 \pm 3.6	0.1000
4	88.5 \pm 8.4	86.9 \pm 7.8	0.5862
5	78.5 \pm 12.7	77.9 \pm 13.8	1.0000
6	95.1 \pm 0.6	96.1 \pm 0.1	1.0000
7	83.5 \pm 6.1	81.2 \pm 8.1	0.5000
8	88.6 \pm 1.2	90.0 \pm 2.1	1.0000
9	85.9 \pm 4.4	85.6 \pm 3.8	0.7500

Table 9. Effect of Myo-inositol supplementation on Chromatin Compaction. Sperm chromatin compaction depicted similar results between control and Myo-inositol-treated frozen-thawed bovine semen samples. Results are expressed as mean \pm standard error of the mean ($n = 5$ straws per animal).

Bull	Chromatin Compaction (%)		
	Control	Myo-inositol	Wilcoxon Test <i>P</i> -value
1	97.8 \pm 0.3	99.0 \pm 0.0	0.2500
2	91.4 \pm 0.4	90.4 \pm 1.6	0.7500
3	97.2 \pm 0.4	97.9 \pm 0.7	0.1000
4	98.9 \pm 0.4	98.5 \pm 0.3	0.7728
5	98.8 \pm 0.4	98.7 \pm 0.6	0.4142
6	98.0 \pm 0.6	98.5 \pm 0.5	0.5000
7	99.0 \pm 0.0	99.0 \pm 0.5	0.5862
8	98.4 \pm 0.4	99.0 \pm 0.0	0.2500
9	97.7 \pm 0.7	98.0 \pm 0.3	0.7500

third of bulls, whereas up to a medium and low RI were determined for the remaining thirds. Specifically regarding the breed, dairy bulls responded in 60% of their samples, while beef bulls responded in 20%. Differences

between breeds may be attributed, at least in part, to the presence of abnormalities in the sperm midpiece, reported to be higher in beef breeds and proposed to result from gamete freezing and thawing; these alterations

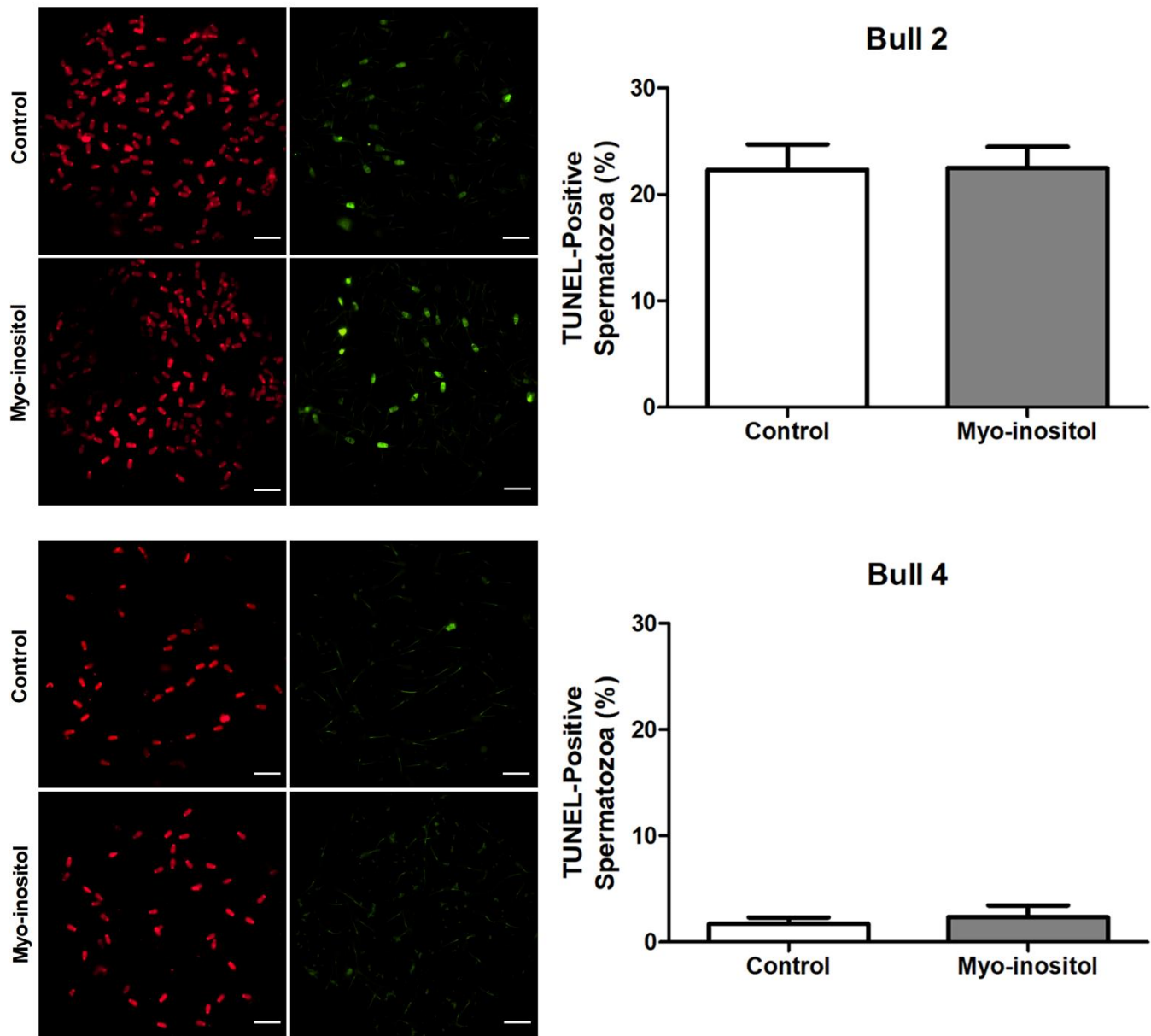


Figure 4. Effect of Myo-inositol supplementation on sperm DNA fragmentation. Representative images of spermatozoa stained with TUNEL label (green) and Propidium Iodide (red) corresponding to bulls 2 and 4 (600X magnification). DNA fragmentation was similar between control and Myo-inositol-treated samples. Results are presented as mean \pm standard error of the mean ($P > 0.05$; Wilcoxon test). Bar = 20 μ m.

could affect sperm motility and may not be overcome after MI treatment (Ghirardosi et al., 2018).

Considering the relevance of the objective evaluation of sperm motility, assessment of sperm kinematics in each replicate of sperm suspensions from all semen samples was also done. As a result of these evaluations, a significant increase was determined in most sperm kinematic parameters after 1h MI supplementation. The findings contrast with those by Boni et al. (2016), who reported a significant improvement in VCL, VAP and ALH, but not in VSL, at the second hour of incubation with MI. Our results are highly relevant considering the association

between sperm kinematics and fertility. Specifically, VCL, VSL, VAP, LIN, and BCF have been associated to bull fertility potential, as shown by the correlation between these and the non-return rate (NRR) (Amann et al., 1989; Farrell et al., 1998; Kathiravan et al., 2011; Michos et al., 2013; Nagy et al., 2015; Gliozzi et al., 2017). Moreover, VCL, VSL, and VAP positively correlated to pregnancy rates (Nagy et al., 2015); whereas STR and ALH did not depict a significant association with bull fertility (Kathiravan et al., 2011). Also, CASA velocity parameters have also been suggested to associate with fertility in studies carried out in pigs (Broekhuijse et al., 2012),

rabbit, ram, dog, rat (Verstegen et al., 2002), and humans (Fetterolf and Rogers, 1990; Larsen et al., 2000; Hirano et al., 2001; Verstegen et al., 2002).

Regarding membrane integrity, an intact and biochemically active plasma membrane is essential for several sperm functions, such as motility, capacitation, acrosome reaction, and interactions with the oviductal epithelium and the oocyte vestments (Yániz et al., 2015); and it positively correlates with NRR (Petrunkina et al., 2001). In the present work, semen supplementation with MI during 1h did not lead to changes in sperm vitality when compared to the control group. Likewise, the percentages of osmotically competent spermatozoa or with an intact acrosome were similar between control and MI-treated samples.

The present study also evaluated chromatin condensation, considered a crucial factor for fertilization success. Chromatin condensation can be altered during cryopreservation (Waterhouse et al., 2010), with a concomitant fertility reduction (Januskauskas et al., 2003). In this sense, Oliveira et al. (2013) reported a significantly negative correlation between chromatin decondensation and fertility using Aniline blue staining. High percentages of spermatozoa with compact chromatin were determined in all samples, and no deleterious effects were recorded after MI supplementation.

Finally, assessment of DNA fragmentation has become a biomarker of male infertility, since sperm DNA fragmentation has been linked to embryonic development defects and low conception rates (Lewis and Simon, 2010; Takeda et al., 2015). Based on this background information, DNA fragmentation was evaluated by the TUNEL assay using frozen-thawed semen samples from one bull depicting normal fertility and from a subfertile bull. As a result, MI supplementation did not exert a significant effect on DNA fragmentation when compared to control conditions.

Overall, this is the first study that thoroughly evaluated the effect of supplementation with MI (2mg/mL) on frozen-thawed bovine semen. As a result, a positive impact of MI was found on a set of sperm quality biomarkers, especially in objective sperm kinematic parameters. Moreover, sperm motility depicted a trend towards an increase in the percentage of total and progressive motile sperm, and in the RI. Interestingly, some differences in sperm response were found between breeds, and among replicates of each bull. Noteworthy, supplementation with MI did not exert a deleterious effect on sperm vitality, plasma membrane osmotic competence, acrosome status, nuclear chromatin condensation, or DNA fragmentation.

ACKNOWLEDGEMENTS

The studies presented have been supported by a grant from Consejo Nacional de Investigaciones Científicas y

Técnicas de Argentina (CONICET) (PIP2015#887) to MHVL. The authors are thankful to members of Lo. Li Pharma (Rome, Italy) for providing us the Myo-inositol to perform the studies, to Dr. R. Mazzeo from the Artificial Insemination Center CIAVT (Venado Tuerto, Santa Fe, Argentina), for providing frozen bull semen samples, and to BIO-OPTIC, S.R.L (Buenos Aires, Argentina), for lending us the Proiser ISAS v1. CASA system to perform sperm kinematics in bull samples. Special thanks to Fundación R. Barón and Fundación Williams for institutional (IBYME) support.

Conflict of interest: Authors declare no conflict of interest.

REFERENCES

- Amann RP (1989). Can the fertility potential of a seminal sample be predicted accurately? *J Androl.* 10(2):89-98.
- Artini PG, Casarosa E, Carletti E, Monteleone P, Di Noia A, Di Berardino OM (2017). In vitro effect of myo-inositol on sperm motility in normal and oligoasthenospermia patients undergoing in vitro fertilization. *Gynecol. Endocrinol.* 33(2):109-112.
- Bailey JL, Bilodeau JF, Cormier N (2000). Semen cryopreservation in domestic animals: a damaging and capacitating phenomenon. *J Androl.* 21(1):1-7.
- Barbato V, Talevi R, Braun S, Merolla A, Sudhakaran S, Longobardi S, Gualtieri R (2017). Supplementation of sperm media with zinc, D-aspartate and co-enzyme Q10 protects bull sperm against exogenous oxidative stress and improves their ability to support embryo development. *Zygote.* 25(2):168-175.
- Bernardi SF, Allende R, Mazzeo R, Monti J, Marini PR (2011). Evaluation of changes occasioned by changes in bovine sperm in the management of dose during handling artificial insemination. *InVet.* 13(2): 25-38.
- Boni R, Gallo A, Cecchini S (2016). Kinetic activity, membrane mitochondrial potential, lipid peroxidation, intracellular pH and calcium of frozen/thawed bovine spermatozoa treated with metabolic enhancers. *Andrology.* 5(1):133-145.
- Broekhuijse ML, Soštarić E, Feitsma H, Gadella BM (2012). The value of microscopic semen motility assessment at collection for a commercial artificial insemination center, a retrospective study on factors explaining variation in pig fertility. *Theriogenology.* 77(7):1466-1479.e3.
- Bucak MN, Ataman MB, Başpınar N, Uysal O, Taşpınar M, Bilgili A, Öztürk C, Güngör Ş, İnanç ME, Akal E (2015). Lycopene and resveratrol improve post-thaw bull sperm parameters: sperm motility, mitochondrial activity and DNA integrity. *Andrologia.* 47(5):545-52.
- Bucak MN, Tuncer PB, Sarıözkan S, Başpınar N, Taşpınar M, Coşkun K, Bilgili A, Akalın PP, Büyükleblebici S, Aydos S, İlğaz S, Sunguroğlu A, Öztuna D (2010). Effects of antioxidants on post-thawed

- bovine sperm and oxidative stress parameters: antioxidants protect DNA integrity against cryodamage. *Cryobiology*. 61(3):248-53.
- Calogero AE, Gullo G, La Vignera S, Condorelli RA, Vaiarelli A (2015). Myoinositol improves sperm parameters and serum reproductive hormones in patients with idiopathic infertility: a prospective double-blind randomized placebo-controlled study. *Andrology*. 3(3):491-5.
- Canepa P, Dal Lago A, De Leo C, Gallo M, Rizzo C, Licata E, Anserini P, Rago R, Scaruffi P (2018). Combined treatment with myo-inositol, alpha-lipoic acid, folic acid and vitamins significantly improves sperm parameters of sub-fertile men: a multi-centric study. *Eur Rev Med Pharmacol Sci*. 22(20):7078-7085.
- Capece M, Romeo G, Ruffo A, Romis L, Mordente S, Di Lauro G (2016). A phytotherapeutic approach to reduce sperm DNA fragmentation in patients with male infertility. *Urologia*. 84(2):79-82.
- Chaveiro, A., Liu, J., Engel, B., Critser, J. K., Woelders, H. (2006). Significant variability among bulls in the sperm membrane permeability for water and glycerol: possible implications for semen freezing protocols for individual males. *Cryobiology*, 53(3), 349–359.
- Condorelli RA, La Vignera S, Bellanca S, Vicari E, Calogero AE (2012). Myoinositol: does it improve sperm mitochondrial function and sperm motility? *Urology*. 79(6):1290-5.
- Condorelli RA, La Vignera S, Di Bari F, Unfer V, Calogero AE (2011). Effects of myoinositol on sperm mitochondrial function in-vitro. *Eur Rev Med Pharmacol Sci*. 15(2):129-34.
- Curry MR (2000). Cryopreservation of semen from domestic livestock. *Rev Reprod*. 5(1):46-52.
- Daghigh-Kia H, Olfati-Karaji R, Hoseinkhani A, Ashrafi I (2014). Effect of rosemary (*Rosmarinus officinalis*) extracts and glutathione antioxidants on bull semen quality after cryopreservation. *Spanish Journal of Agricultural Research*. 12(1): 98-105.
- Dinkova A, Martinov D, Konova E (2017). Efficacy of myo-inositol in the clinical management of patients with asthenozoospermia. *Eur Rev Med Pharmacol Sci*. 21(2 Suppl):62-65.
- Dodaran HV, Zhandi M, Sharafi M, Nejati-Amiri E, Nejati-Javaremi A, Mohammadi-Sangcheshmeh A, Shehab-El-Deen MA, Shakeri M (2015). Effect of ethanol induced mild stress on post-thawed bull sperm quality. *Cryobiology*. 71(1):12-7.
- Farrell PB, Presicce GA, Brockett CC, Foote RH (1998). Quantification of bull sperm characteristics measured by computer-assisted sperm analysis (CASA) and the relationship to fertility. *Theriogenology*. 49(4):871-9.
- Ferré L, Grötter L, Fresno C, Cattaneo L (2018). Efecto de la suplementación con ciclodextrinas cargadas con colesterol al semen sexado bovino post-descongelación para su uso en producción in vitro de embriones. *Arch. Zootec*. 67 (259): 332-339.
- Fetterolf PM, Rogers BJ (1990). Prediction of human sperm penetrating ability using computerized motion parameters. *MolReprod Dev*. 27(4):326-31.
- Food and Agriculture Organization of the United Nations (FAO) (2020). *Food Outlook – Biannual Report on Global Food Markets*, ed. FAO, Rome.
- Food and Agriculture Organization of the United Nations (FAO) (2018). *Food Outlook – Biannual Report on Global Food Markets*, ed. FAO, Rome.
- Ghirardosi, MS, Fischman, ML, Jorge, AE, Chan D, Cisale H (2018). Relationship between morphological abnormalities in commercial bull frozen semen doses and conception rate. *Andrologia*. 50(3).
- Gliozzi TM, Turri F, Manes S, Cassinelli C, Pizzi F (2017). The combination of kinetic and flow cytometric semen parameters as a tool to predict fertility in cryopreserved bull semen. *Animal*. 11(11):1975-1982.
- Gomes FP, Park R, Viana AG, Fernandez-Costa C, Topper E, Kaya A, Memili E, Yates JR 3rd, Moura AA (2020). Protein signatures of seminal plasma from bulls with contrasting frozen-thawed sperm viability. *Sci Rep*.;10(1):14661.
- Grötter LG, Cattaneo L, Marini PE, Kjelland ME, Ferré LB (2019). Recent advances in bovine sperm cryopreservation techniques with a focus on sperm post-thaw quality optimization. *ReprodDomest Anim*. 54(4):655-665.
- Gulino FA, Leonardi E, Marilli I, Musmeci G, Vitale SG, Leanza V, Palumbo MA (2016). Effect of treatment with myo-inositol on semen parameters of patients undergoing an IVF cycle: in vivo study. *Gynecol Endocrinol*. 32(1):65-8.
- Hirano Y, Shibahara H, Obara H, Suzuki T, Takamizawa S, Yamaguchi C, Tsunoda H, Sato I (2001). Relationships between sperm motility characteristics assessed by the computer-aided sperm analysis (CASA) and fertilization rates in vitro. *J Assist. Reprod Genet*. 18(4):213-8.
- Januskauskas A, Johannisson A, Rodriguez-Martinez H (2003). Subtle membrane changes in cryopreserved bull semen in relation with sperm viability, chromatin structure, and field fertility. *Theriogenology*. 60(4):743-58.
- Kaka A, Wahid H, Rosnina Y, Yimer N, Khumran AM, Behan AA, Ebrahimi M (2014). Alpha-linolenic acid supplementation in tris extender can improve frozen-thawed bull semen quality. *Reprod. Domest Anim*. 50(1):29-33.
- Kathiravan P, Kalatharan J, Karthikeya G, Rengarajan K, Kadirvel G (2011). Objective sperm motion analysis to assess dairy bull fertility using computer-aided system-- a review. *Reprod. Domest Anim*. 46(1):165-72.
- Khalifa TA, Rekkas CA, Lymberopoulos AG, Sioga A, Dimitriadis I, Papanikolaou T (2008). Factors affecting chromatin stability of bovine spermatozoa. *Anim. Reprod Sci*. 104(2-4):143-63.
- Larsen L, Scheike T, Jensen TK, Bonde JP, Ernst E, Hjøllund

- NH, Zhou Y, Skakkebaek NE, Giwercman A (2000). Computer-assisted semen analysis parameters as predictors for fertility of men from the general population. The Danish First Pregnancy Planner Study Team. *Hum Reprod.* 15(7):1562-7.
- Layek SS, Mohanty TK, Kumaresan A, Parks JE (2016). Cryopreservation of bull semen: Evolution from egg yolk based to soybean based extenders. *Anim. Reprod Sci.* 172:1-9.
- Lewis SE, Simon L (2010). Clinical implications of sperm DNA damage. *Hum Fertil (Camb).* 13(4):201-7.
- Michos IA, Basioura AG, Boscoc CM, Tsakmakidis IA (2013). Proper use and impact of 'Computer Assisted SemenAnalysis' technique on semen evaluation of farm animals. *Journal of the Hellenic Veterinary Medical Society.* 64 (4):267-74.
- Mirzoyan AV, Nebesikhina NA, Voynova NV, Chistyakov VA (2006). Preliminary results on ascorbic acid and lysine suppression of clastogenic effect of deep-frozen sperm of the Russian sturgeon (*Acipenser gueldenstaedti*). *Int. J. Refrig.* 29, 374–378.
- Montanino Oliva M, Minutolo E, Lippa A, Iaconianni P, Vaiarelli A (2016). Effect of Myoinositol and Antioxidants on Sperm Quality in Men with Metabolic Syndrome. *Int J Endocrinol.* 2016:1674950.
- Murgia F, Corda V, Serrenti M, Usai V, Santoru ML, Hurt KJ, Passaretti M, Monni MC, Atzori L, Monni G (2020). Seminal Fluid Metabolomic Markers of Oligozoospermic Infertility in Humans. *Metabolites.* 10(2):64.
- Nagy Á, Polichronopoulos T, Gáspárdy A, Solti L, Cseh S (2015). Correlation between bull fertility and sperm cell velocity parameters generated by computer-assisted semen analysis. *Acta Vet Hung.* 63(3):370-81.
- Oliveira LZ, de Arruda RP, de Andrade AF, Celeghini EC, Reeb PD, Martins JP, dos Santos RM, Beletti ME, Peres RF, Monteiro FM, Hossepian de Lima VF (2013). Assessment of in vitro sperm characteristics and their importance in the prediction of conception rate in a bovine timed-AI program. *Anim. Reprod. Sci.* 137(3-4):145-55.
- Ortega Ferrusola C, González Fernández L, Salazar Sandoval C, Macías García B, Rodríguez Martínez H, Tapia JA, Peña FJ (2010). Inhibition of the mitochondrial permeability transition pore reduces "apoptosis like" changes during cryopreservation of stallion spermatozoa. *Theriogenology.* 74(3):458-65.
- Öztürk C, Güngör Ş, Ataman MB, Bucak MN, Başpınar N, İli P, Inanç ME (2017). Effects of arginine and trehalose on post-thawed bovine sperm quality. *Acta Vet Hung.* 65(3):429-439.
- Padrik P, Hallap T, Kaart T, Bulitko T, Jaakma U (2012). Relationships between the results of hypo-osmotic swelling tests, sperm motility and fertility in Estonian Holstein dairy bulls. *Czech J. Anim. Sci.* 57: 490-497.
- Palma GA, Olivier NS, Neumüller CH, Sinowatz F (2007). *Ciencia, Tecnología y Sociedad.* In: Palma G.A. (Ed.), *Biotechnología de la Reproducción.* Mar del Plata, pp 1-41.
- Palmieri M, Papale P, Della Ragione A, Quaranta G, Russo G, Russo S (2016). In Vitro Antioxidant Treatment of Semen Samples in Assisted Reproductive Technology: Effects of Myo-Inositol on Nemaspermic Parameters. *Int J Endocrinol.* 2016:2839041.
- Pang YW, Sun YQ, Jiang XL, Huang ZQ, Zhao SJ, Du WH, Hao HS, Zhao XM, Zhu HB (2016). Protective effects of melatonin on bovine sperm characteristics and subsequent in vitro embryo development. *MolReprod Dev.* 83(11):993-1002.
- Park JY, Kim SG, Kim YY, Kwak SJ, Yoo CS, Lee KH, Park IH, Sun HG, Cho JD, Chi HJ (2016). Addition of myoinositol to sperm preparation medium improved the sperm motility and pregnancy rate of IUI cycles in asthenozoospermic patients. 32nd Annual Meeting of ESHRE. July 03 to 06, 2016, Helsinki- Finland. P-022. Pg. 1139.
- Paternostro F, Capitanio E, Galimberti A, Previtali G, Zanga L, Arnoldi M, Fusi F (2015). Effect of supplementation of myo-inositol in the cryopreservation process of human spermatozoa. 31st Annual Meeting of ESHRE. June 14 to 17, 2015, Lisbon – Portugal, P-122. Pg. i175.
- Peña FJ, Johannisson A, Wallgren M, Rodriguez Martinez H (2003). Antioxidant supplementation in vitro improves boar sperm motility and mitochondrial membrane potential after cryopreservation of different fractions of the ejaculate. *AnimReprod Sci.* 78(1-2):85-98.
- Petrunkina AM, Harrison RA, Hebel M, Weitze KF, Töpfer-Petersen E (2001). Role of quinine-sensitive ion channels in volume regulation in boar and bull spermatozoa. *Reproduction.* 122(2):327-36.
- Pini T, Leahy T, de Graaf SP (2018). Sublethal sperm freezing damage: Manifestations and solutions. *Theriogenology.* 118:172-181.
- Rego JP, Martins JM, Wolf CA, van Tilburg M, Moreno F, Monteiro-Moreira AC, Moreira RA, Santos DO, Moura AA (2016). Proteomic analysis of seminal plasma and sperm cells and their associations with semen freezability in Guzarat bulls. *J Anim Sci.*;94(12):5308-5320.
- Rutter B, Russo A (2006). Bases para la evaluación de la aptitud reproductiva del toro, 2nd ed. *AgroVet, Buenos Aires.*
- Saleh R, Assaf H, Mabd El Maged W, Fawzy M, Elsuity MA (2017). Possitive effects of in-vitro myo-inositol supplementation of cryopreserved human sperm on the outcome of cryopreservation: a randomized controlled trial. 73rd ASRM Scientific Congress. October 28 to November 1, 2017, San Antonio, Texas, USA. *Fertility & Sterility;* 108 (3S): P-531, e309.
- Salisbury GW, VanDemark NL (1961). *Physiology of reproduction and artificial insemination of cattle.* ed. W. H. Freeman and Company, San Francisco.
- Sapanidou V, Taitzoglou I, Tsakmakidis I, Kourtzelis I, Fletouris

- D, Theodoridis A, Zervos I, Tsantariotou M (2015). Antioxidant effect of crocin on bovine sperm quality and in vitro fertilization. *Theriogenology*. 84(8):1273-82.
- Scarselli F, Lobascio AM, Terribile M, Casciani V, Greco P, Franco G, Minasi MG, Greco E (2016). Analysis of MYO-Inositol effect on spermatozoa motility, in hyper viscous ejaculates and in patients with grades II and III varicocele. *Arch ItalUrolAndrol*. 88(4):279-283.
- Sieme H, Oldenhof H, Wolkers WF (2015). Sperm Membrane Behaviour during Cooling and Cryopreservation. *Reprod. Domest Anim*. 50 Suppl 3:20-6.
- Takeda K, Uchiyama K, Kinukawa M, Tagami T, Kaneda M, Watanabe S (2015). Evaluation of sperm DNA damage in bulls by TUNEL assay as a parameter of semen quality. *J Reprod Dev*. 61(3):185-90.
- Tuncer PB, Bucak MN, Büyükleblebici S, Sarıözkan S, Yeni D, Eken A, Akalın PP, Kinet H, Avdatek F, Fidan AF, Gündoğan M (2010). The effect of cysteine and glutathione on sperm and oxidative stress parameters of post-thawed bull semen. *Cryobiology*. 61(3):303-7.
- Vazquez-Levin MH, Verón GL (2020). Myo-inositol in health and disease: its impact on semen parameters and male fertility. *Andrology*. 8(2):277-298.
- Verstegen J, Iguer-Ouada M, Onclin K (2002). Computer assisted semen analyzers in andrology research and veterinary practice. *Theriogenology*. 57(1):149-79.
- Waterhouse KE, Gjeldnes A, Tverdal A, De Angelis PM, Farstad W, Håård M, Kommisrud E (2010). Alterations of sperm DNA integrity during cryopreservation procedure and in vitro incubation of bull semen. *AnimReprod Sci*. 117(1-2):34-42.
- Watson PF (1995). Recent developments and concepts in the cryopreservation of spermatozoa and the assessment of their post-thawing function. *Reprod. Fertil Dev*. 7(4):871-91.
- Watson PF (2000). The causes of reduced fertility with cryopreserved semen. *Anim. Reprod Sci*. 60-61:481-92.
- Yániz JL, Soler C, Santolaria P (2015). Computer assisted sperm morphometry in mammals: a review. *Anim. Reprod Sci*. 156:1-12.
- Zhao HW, Li QW, Ning GZ, Han ZS, Jiang ZL, Duan YF (2009). *Rhodiola sacra* aqueous extract (RSAE) improves biochemical and sperm characteristics in cryopreserved boar semen. *Theriogenology*. 71(5):849-57.