

Full Length Research Paper

# Evaluating Ploidy and Genetic Variability in *MUSA* Species at the International Institute of Tropical Agriculture

M. Pillay<sup>1\*</sup>, E. Ogundiwin<sup>1</sup>, A. Tenkouano<sup>1</sup>, and J. Dolezel<sup>2</sup>

<sup>1</sup>International Institute of Tropical Agriculture, P. O. Box 7878, Kampala, Uganda <sup>2</sup>Institute of Experimental Botany, Laboratory of Molecular Cytogenetics and Cytometry, CZ-77200 Olomouc, Czech Republic.

Accepted 30 March, 2024

*MUSA* spp (bananas and plantains) constitute a hybrid-polyploid complex and are classified according to different genome compositions such as AA, BB, AB, AAA, AAB, ABB, AAAA, ABBB, AAAB and AABB. Knowledge of ploidy and exact genome compositions of the parental material is essential for *MUSA* breeding. This study determined the ploidy levels and genome composition of the *MUSA* germplasm collection, constituting over 300 accessions, at the International Institute of Tropical Agriculture in Nigeria and Uganda. Flow cytometric analysis of nuclear DNA content was used to estimate ploidy levels, while genome composition was ascertained with RAPD markers that are specific for the A and B genomes of *MUSA*. It was determined that at least 8% of the plants in the germplasm collection were miss-classified in terms of ploidy and/or genome composition. The cultivars 'Pisang awak', 'Foulah 4' and 'Nzizi', previously classified as triploids, were found to be tetraploids by flow cytometry and conventional root tip chromosome counts. Similarly, cultivars that were previously classified as diploids including 'Too', and 'Toowoolee' were found to be triploids in our analysis. Ploidy and genome classification in *MUSA* was generally determined from morphological characteristics. While our study showed that such a system is not always reliable, it was interesting to find that none of the plantains in the germplasm collection were miss-classified with regards to both ploidy and genome composition.

**Key words:** Banana, plantain, genomes, ploidy.

## INTRODUCTION

Modern bananas and plantains originated from inter- and intra-specific hybridization of two wild diploid ( $2n = 2x = 22$ ) species, *M. acuminata* and *M. balbisiana* that possess the A and B genomes, respectively (Simmonds, 1962). Edible bananas have either 22, 33 or 44 chromosomes representing diploid, triploid and tetraploid cultivars (Stover and Simmonds, 1987). These cultivars have a wide range of genome permutations including AA,

(Simmonds, 1962). Karamura et al. (1998) reported that the diploids AA gave rise to AAA triploids by meiotic BB, AB, AAA, AAB, and ABB. Other combinations such as ABBB, AAAB and AABB are also thought to occur in South East Asia (Richardson et al., 1965). Intra-specific hybridization between various subspecies of *M. acuminata* produced a range of extant diploid cultivars Simmonds (1962). Karamura et al. (1998) reported that the diploids AA gave rise to AAA triploids by meiotic chromosome restitution while interspecific hybridization between AA types (and perhaps AAA) and *M. balbisiana* resulted into various AAB and ABB types of today. Classification of bananas into genome groups is based on a scoring system that takes into account the relative contribution of the A and B genome characteristics in the constitution of any given cultivar (Stover and Simmonds, 1987). Although widely and generally adopted for many years, this method is only as complete as the information available when they are constructed (Karamura, 1998).

\*Corresponding authors E-mail: International Mailing address: IITA, Co L.W. Lambourn & Co, Carolyn House, 26 Dingwall Road, Croydon CR9 3EE, England. E-mail: m.pillay@cgiar.org.

‡Present address: Kearney Agricultural Center, UC Davis 9240 S. Riverbend Ave. Parlier, CA 93648. E-mail: Ebenezer@uckac.edu.

§Present address: IITA-Cameroon, BP 2008 Messa, Yaoundé, Cameroon E-mail: A.Tenkouano@cgiar.org.

There are numerous cultivars and clones in Borneo, Indonesia and Vietnam that have not been classified (Robinson, 1996; Danh et al., 1998) with many differences existing within their genome groups. These difference may be due to the A genome from different wild subspecies of *M. acuminata* and or somatic mutations (Karamura, 1998).

Pillay et al. (2000) described the various RAPD DNA markers that are specific for the A and B genomes and can be used to identify the genomic composition of a wide range of *Musa* cultivars and hybrids. The advantages of these markers include (i) they do not rely on scoring morphological traits, (ii) can be used at any stage of the life cycle of the plant, and (iii) provides an objective way for genome classification in *Musa*. The International Institute of Tropical Agriculture (IITA) maintains a large germplasm collection of banana and plantains in southeast Nigeria and in Uganda.

The ploidy and genome composition of these plants were deduced primarily from scoring of their morphological characteristics and most of these plants were obtained as *in vitro* propagules (Vuylsteke and Swennen, 1992). Although the exact time these plants spent in culture is unknown, induced variation in ploidy is always a concern in such plants. The practical limitations inherent in breeding a perennial crop like *Musa* include the long life cycle and extensive land requirements makes it imperative that the breeder is acquainted with basic information such as the ploidy and genome composition of the breeding material. An accurate assessment of the ploidy and genome composition using reliable techniques is worthwhile. Currently, new and rapid reliable molecular techniques are available to verify the ploidy and genome composition of these plants.. The objectives of this study were to determine the genomic composition of the IITA *Musa* germplasm collection using RAPD markers and estimate the DNA ploidy levels by cytometric analysis.

## MATERIALS AND METHODS

### Plant material

The plant material for this study (Table 1) was obtained from our *Musa* germplasm collection at the International Institute of Tropical Agriculture, Onne Research Station, southeast Nigeria and from our Namulonge Research Station in Uganda. Cultural conditions are the same as those described by Swennen (1990).

### Ploidy analysis

The nuclear DNA content of each plant was analyzed by flow cytometry to estimate the ploidy levels following procedures described by Pillay et al. (2000). Briefly, the cell nuclei were isolated by chopping the midrib tissue from young leaves with a sharp razor blade in cold OTTO I buffer (0.1 M citric acid monohydrate, 0.5% Tween 20). The suspension of nuclei was filtered through a 50  $\mu$ m nylon mesh to remove large cellular material. The nuclei were stained in OTTO II buffer (0.4 M

Na<sub>2</sub>HPO<sub>4</sub>, supplemented with 4  $\mu$ g/ml DAPI, 4',6-diamidino-2-phenylindole). The fluorescence of the nuclei was analyzed with a Partec flow cytometer (Partec GmbH, Munster, Germany), at a rate of 50-60 nuclei per sec. To standardize the ploidy analyzer, the gain was adjusted so that the diploid peak represented by nuclei from *M. acuminata* ssp. *burmanicoides*, Calcutta 4, was set at channel 50. Under these conditions, the triploid peak is expected at channel 75 and a tetraploid peak at channel 100. At least 5000-10,000 nuclei were analyzed for each sample. Three leaf samples were tested from each of four plants of each accession.

## Chromosome counts and genome composition

Karyological analysis to establish chromosome numbers in root-tip meristems were carried out as described by Pillay and Adeleke (2001). Chromosome counts were done for only those plants which the ploidy levels obtained in this study differed from those reported in previous studies. On the other hand, the genome composition of each plant was determined using RAPD primers that are specific for the A and B genomes in *Musa* (Pillay et al., 2000). Briefly eighty 10-mer primers were used to amplify DNA from *Musa acuminata* spp. *burmannicoides* (Calcutta 4) (AA genomes) and *M. balbisiana* (BB genomes). Two primers A17 and D10 from Operon Technologies (Alameda, Calif) produced bands unique to 'Calcutta 4' and were considered specific to the A genome. These bands did not appear in *M. balbisiana*. Similarly, primer A18 produced three bands that were specific to the B genome and absent in 'Calcutta 4. In the latter case bands identifying whether a plant had either one or two B genomes were observed. Together with ploidy analysis the genome composition of 40 genotypes were identified with these markers. PCR-RFLP of the ribosomal DNA internal transcribed spacers also provides markers for the A and B genomes in *Musa* (Nwakanma et al., 2003). These markers were tested with 17 of the genotypes used in this study and the genome compositions were same as those identified by the RAPD markers.

## RESULTS AND DISCUSSION

This study aimed at providing an accurate assessment of the ploidy and genome composition of the IITA *Musa* germplasm collection that comprises of over 300 genotypes from various regions of the world. Prior to this study, both the ploidy and genome composition of the germplasm were assessed on the basis of morphological characteristics. This study showed that at least 8% of plants differed in their ploidy status and/or genome composition from those reported in earlier literature both formal and informal (Table 1). 'Pisang awak', 'Foulah 4' and 'Nzizi' were previously classified as triploids (Stover and Simmonds, 1987, ITC document). Using flow cytometry, this study showed that they are tetraploids (Figure 1). Chromosome counts from root tip cells showed  $2n = 44$  for 'P. awak', 'Foulah 4' and 'Nzizi' (Figure 2a). Similarly, cultivars that were previously classified as diploids including 'Too' (Figure 2b) 'Toowoolee' (Figure 2c) and 'Sukali ndizi' were found to be triploids in our analysis. Although these plants constitute a small percentage of the banana germplasm, it is clear that morphology alone could not be used to determine ploidy or genome composition of bananas. An alternative explanation for the differences in ploidy levels of some of these genotypes is they may be represented

**Table 1.** *Musa* species and accessions used for ploidy analysis and genome composition (\* shows new ploidy levels).

| No | Germplasm  | Ploidy*  | A17 band | A18a band | A18b band | Genome composition |
|----|--|----------|----------|-----------|-----------|--------------------|
| 1  | Aivip  | 2x       | +        | -         | -         | AA                 |
| 2  | Borneo   | 2x       | +        | -         | -         | AA                 |
| 3  | Colatino Ouro                                      | 2x       | +        | -         | -         | AA                 |
| 4  | Diploid basilian                                   | 2x (3x)* | +        | -         | -         | AAA                |
| 5  | Djum metek   | 2x       | +        | -         | -         | AA                 |
| 6  | Djum tau   | 2x       | +        | -         | -         | AA                 |
| 7  | Figue Sucree                                       | 2x       | +        | -         | -         | AA                 |
| 8  | Galeo  | 2x       | +        | -         | -         | AA                 |
| 9  | Gulum  | 2x       | +        | -         | -         | AA                 |
| 10 | Guyod  | 2x       | +        | -         | -         | AA                 |
| 11 | Gwanhour   | 2x       | +        | -         | -         | AA                 |
| 12 | Heva   | 2x       | +        | -         | -         | AA                 |
| 13 | Long Tavoy   | 2x       | +        | -         | -         | AA                 |
| 14 | <i>M. acuminata</i> Calcutta 4                     | 2x       | +        | -         | -         | AA                 |
| 15 | <i>M. acuminata</i> holotype                       | 2x       | +        | -         | -         | AA                 |
| 16 | <i>M. acuminata</i> hybrid (302)                   | 2x       | +        | -         | -         | AA                 |
| 17 | <i>M. acuminata</i> hybrid (BS 382)                | 2x       | +        | -         | -         | AA                 |
| 18 | <i>M. acuminata</i> Madang                         | 2x       | +        | -         | -         | AA                 |
| 19 | <i>M. acuminata</i> ssp. <i>zebrine</i>            | 2x       | +        | -         | -         | AA                 |
| 20 | <i>M. acuminata</i> ssp. <i>Malaccensis</i> Pahang | 2x       | +        | -         | -         | AA                 |
| 21 | <i>M. acuminata</i> ssp. <i>Malaccensis</i>        | 2x       | +        | -         | -         | AA                 |
| 22 | <i>M. acuminata</i> ssp. Selangor                  | 2x       | +        | -         | -         | AA                 |
| 23 | <i>M. acuminata</i> ssp. <i>Truncata</i> (BS 393)  | 2x       | +        | -         | -         | AA                 |
| 24 | <i>M. acuminata</i> ssp. <i>Zebrina</i> (Maioa)    | 2x       | +        | -         | -         | AA                 |
| 25 | <i>M. acuminata</i> ssp. <i>truncata</i> (BS 252)  | 2x       | +        | -         | -         | AA                 |
| 26 | <i>M. acuminata</i> ssp. <i>truncata</i> (BS393)   | 2x       | +        | -         | -         | AA                 |
| 27 | <i>M. acuminata</i> ssp. <i>Zebrina</i> G.F.       | 2x       | +        | -         | -         | AA                 |
| 28 | <i>M. balbisiana</i>                               | 2x       | -        | +         | +         | BB                 |
| 29 | <i>M. basjoo</i>                                   | 2x       | ab       | P         | -         | AA                 |
| 30 | <i>M. laterita</i>                                 | 2x       | +        | -         | -         | AA                 |
| 31 | <i>M. peekeli</i>                                  | 2x       | -        | -         | -         | TT                 |
| 32 | <i>M. schizocarpa</i>                              | 2x       | -        | -         | -         | SS                 |
| 33 | Manag  | 2x       | +        | -         | -         | AA                 |
| 34 | Monjet   | 2x       | +        | -         | -         | AA                 |
| 35 | Morong Princesa                                    | 2x       | +        | -         | -         | AA                 |
| 36 | <i>Musa acuminata</i> (120)                        | 2x       | +        | -         | -         | AA                 |
| 37 | No 110   | 2x       | +        | -         | -         | AA                 |
| 38 | Pa (musore)  | 2x       | +        | -         | -         | AA                 |
| 39 | Pa (Pathhalong)                                    | 2x       | +        | -         | -         | AA                 |
| 40 | Padri  | 2x       | +        | -         | -         | AA                 |
| 41 | Pisang Berlin                                      | 2x       | +        | -         | -         | AA                 |
| 42 | Pisang buntal                                      | 2x       | +        | -         | -         | AA                 |
| 43 | Pisang gigi buaya                                  | 2x       | +        | -         | -         | AA                 |
| 44 | Pisang jari buaya                                  | 2x       | +        | -         | -         | AA                 |
| 45 | Pisang lilin                                       | 2x       | +        | -         | -         | AA                 |
| 46 | Pisang madu  | 2x       | +        | -         | -         | AA                 |

Table 1. contd.

|    |                    |          |   |   |   |      |
|----|--------------------|----------|---|---|---|------|
| 47 | Pisang mas         | 2x       | + | - | - | AA   |
| 48 | Pisang Mulik       | 2x       | + | - | - | AA   |
| 49 | Pisang songkla     | 2x       | + | - | - | AA   |
| 50 | Pisang tongat      | 2x       | + | - | - | AA   |
| 51 | Pitu               | 2x       | + | - | - | AA   |
| 52 | Pu-te-la-bum       | 2x       | + | - | - | AA   |
| 53 | S.F. 247           | 2x       | + | - | - | AA   |
| 54 | S.F. 248           | 2x       | + | - | - | AA   |
| 55 | S.F. 265           | 2x       | + | - | - | AA   |
| 56 | Saing Todloh       | 2x       | + | - | - | AA   |
| 57 | Tamai              | 2x       | + | - | - | AA   |
| 58 | Thong Det          | 2x       | + | - | - | AA   |
| 59 | Tjau Lagada        | 2x       | + | - | - | AA   |
| 60 | Tuu Gia            | 2x       | + | - | - | AA   |
| 61 | Ulungan            | 2x       | + | - | - | AA   |
| 62 | Undu Jamau         | 2x       | + | - | - | AA   |
| 63 | Unknown Dibit      | 2x       | + | - | - | AA   |
| 64 | Uwati              | 2x       | + | - | - | AA   |
| 65 | Waigu              | 2x       | + | - | - | AA   |
| 66 | Duningi            | 3x       | + | - | - | AAA  |
| 67 | Dwarf Cavendish    | 3x       | + | - | - | AAA  |
| 68 | Giant Cavendish    | 3x       | + | - | - | AAA  |
| 69 | Gros Michel        | 3x       | + | - | - | AAA  |
| 70 | Green Red          | 3x       | + | - | - | AAA  |
| 71 | Highgate           | 3x       | + | - | - | AAA  |
| 72 | Lacatan            | 3x       | + | - | - | AAA  |
| 73 | Lai                | 3x       | + | - | - | AAA  |
| 74 | Leite              | 3x       | + | - | - | AAA  |
| 75 | Marauw             | 3x       | + | - | - | AAA  |
| 76 | Muga               | 3x       | + | - | - | AAA  |
| 77 | Ouro Mel           | 3x       | + | - | - | AAA  |
| 78 | Pisang masak hijau | 3x       | + | - | - | AAA  |
| 79 | Pisang nangka      | 3x       | + | - | - | AAA  |
| 80 | Poyo               | 3x       | + | - | - | AAA  |
| 81 | Red                | 3x       | + | - | - | AAA  |
| 82 | Red Dacca          | 3x       | + | - | - | AAA  |
| 83 | Too                | 2x (3x)* | + | - | - | AAA  |
| 84 | Toowoolee          | 3x (3x)* | + | - | - | AAA  |
| 85 | Wh-O-Gu            | 3x       | + | - | - | AAA  |
| 86 | Yangambi Km5       | 3x       | + | - | - | AAA  |
| 87 | IC 2               | 4x       | + | - | - | AAAA |
| 88 | Ngern              | 4x       | + | + | - | AAAB |
| 89 | Oura de Mata       | 4x       | + | + | - | AAAB |
| 90 | Platina            | 4x       | + | + | - | AAAB |
| 91 | 3 hand planty      | 3x       | + | + | - | AAB  |
| 92 | 75.19S             | 3x       | + | + | - | AAB  |
| 93 | 85.03              | 3x       | + | + | - | AAB  |
| 94 | Abomienu           | 3x       | + | - | - | AAB  |

Table 1. contd.

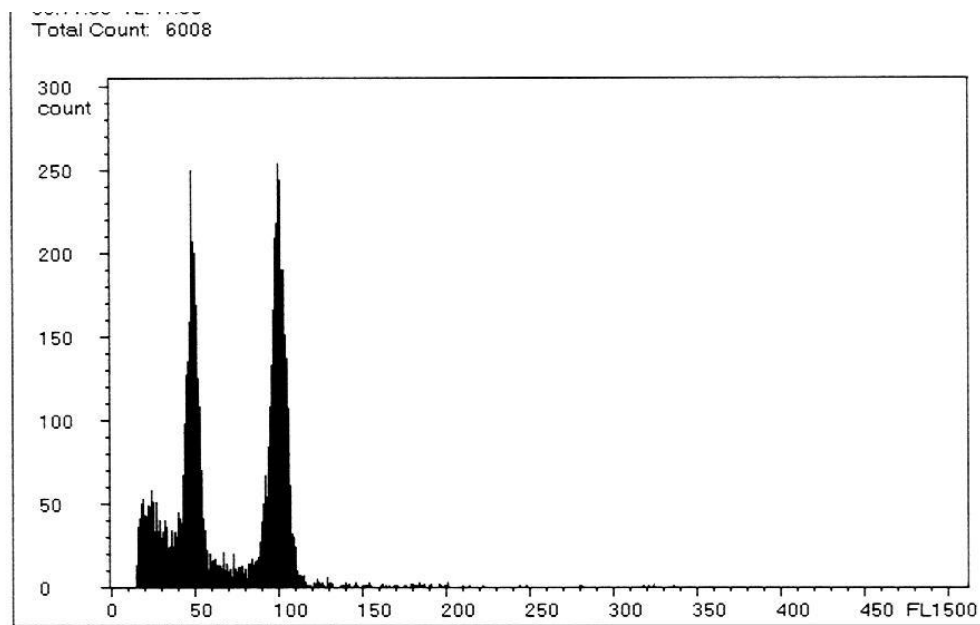
|     |                       |    |   |   |   |     |
|-----|-----------------------|----|---|---|---|-----|
| 95  | Agbagba               | 3x | + | + | - | AAB |
| 96  | Amou                  | 3x | + | + | - | AAB |
| 97  | Apantu                | 3x | + | + | - | AAB |
| 98  | Apem Onniaba          | 3x | + | + | - | AAB |
| 99  | Apempa                | 3x | + | + | - | AAB |
| 100 | Asamiensa             | 3x | + | + | - | AAB |
| 101 | Atali Kiogo           | 3x | + | + | - | AAB |
| 102 | Banana Serpent        | 3x | + | + | - | AAB |
| 103 | Batard                | 3x | + | + | - | AAB |
| 104 | Big Ebanga            | 3x | + | + | - | AAB |
| 105 | Bise Egome 2          | 3x | + | + | - | AAB |
| 106 | Bo-Ahiu-Abue          | 3x | + | + | - | AAB |
| 107 | Bobby Tannap          | 3x | + | + | - | AAB |
| 108 | Bungaoisan            | 3x | + | + | - | AAB |
| 109 | Cantabalon            | 3x | + | + | - | AAB |
| 110 | Corne Plantain        | 3x | + | + | - | AAB |
| 111 | Currare               | 3x | + | + | - | AAB |
| 112 | Currare Enano         | 3x | + | + | - | AAB |
| 113 | Diby 2 off-type       | 3x | + | + | - | AAB |
| 114 | Didiede               | 3x | + | + | - | AAB |
| 115 | Dom. H. Rojo (630)    | 3x | + | + | - | AAB |
| 116 | Dominico 500          | 3x | + | + | - | AAB |
| 117 | Dominico Macho (635)  | 3x | + | + | - | AAB |
| 118 | Dominico rojo (641)   | 3x | + | + | - | AAB |
| 119 | Dwarf False Horn (62) | 3x | + | + | - | AAB |
| 120 | Dwarf French          | 3x | + | + | - | AAB |
| 121 | Eberedia Ukom         | 3x | + | + | - | AAB |
| 122 | Egjoga                | 3x | + | + | - | AAB |
| 123 | Elarioon              | 3x | + | + | - | AAB |
| 124 | Essang                | 3x | + | + | - | AAB |
| 125 | Figue Famille         | 3x | + | + | - | AAB |
| 126 | French Reversion      | 3x | + | + | - | AAB |
| 127 | French Rouge          | 3x | + | + | - | AAB |
| 128 | Gabon 2               | 3x | + | + | - | AAB |
| 129 | Gabon 4               | 3x | + | + | - | AAB |
| 130 | Giant Cavendish       | 3x | + | - | - | AAB |
| 131 | Harton Maqueno (628)  | 3x | + | + | - | AAB |
| 132 | Harton Tigre (642)    | 3x | + | + | - | AAB |
| 133 | Horse Plantain        | 3x | + | + | - | AAB |
| 134 | Ihitism               | 3x | + | + | - | AAB |
| 135 | Kelong Mekintu        | 3x | + | + | - | AAB |
| 136 | Kinkala               | 3x | + | + | - | AAB |
| 137 | Kiogo                 | 3x | + | + | - | AAB |
| 138 | Klue roi wee          | 3x | + | + | - | AAB |
| 139 | Laknau (AV-66)        | 3x | + | + | - | AAB |
| 140 | Lifong Liko           | 3x | + | + | - | AAB |
| 141 | Lysoka                | 3x | + | + | - | AAB |
| 142 | M. Ebanga             | 3x | + | + | - | AAB |

Table 1.contd.

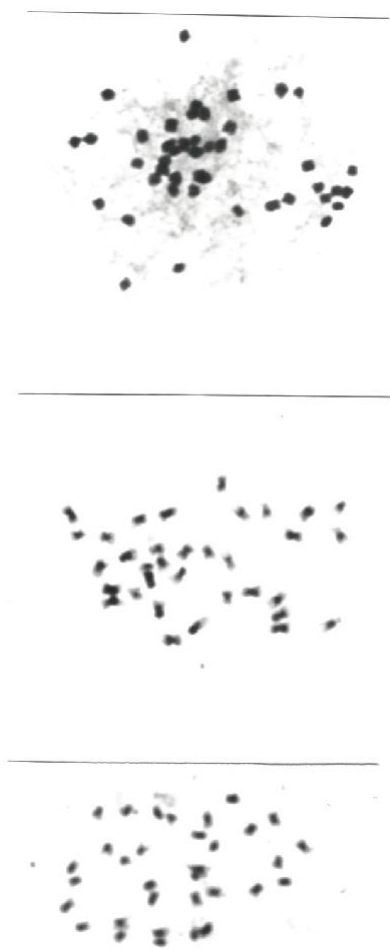
|     |                         |          |   |   |   |     |
|-----|-------------------------|----------|---|---|---|-----|
| 143 | M009                    | 3x       | + | + | - | AAB |
| 144 | Madre-Del-Plantanar     | 3x       | + | + | - | AAB |
| 145 | Mbeta 1 (Mysore)        | 3x       | + | + | - | AAB |
| 146 | Mbi Egome 3             | 3x       | + | + | - | AAB |
| 147 | Mbi-Egome 1             | 3x       | + | + | - | AAB |
| 148 | Mbirinyong              | 3x       | + | + | - | AAB |
| 149 | Mbirinyong G.M.         | 3x       | + | + | - | AAB |
| 150 | Mimi Abue               | 3x       | + | + | - | AAB |
| 151 | Moungali                | 3x       | + | + | - | AAB |
| 152 | Moutouka 1              | 3x       | + | + | - | AAB |
| 153 | Moutouka 2              | 3x       | + | + | - | AAB |
| 154 | Msisia                  | 3x       | + | + | - | AAB |
| 155 | Mulolou                 | 3x       | + | + | - | AAB |
| 156 | Muracho                 | 3x       | + | + | - | AAB |
| 157 | Mzuzu-Nothing but green | 3x       | + | + | - | AAB |
| 158 | Nadzia                  | 3x       | + | + | - | AAB |
| 159 | Nazika                  | 3x       | + | + | - | AAB |
| 160 | Ngok Egome              | 3x       | + | + | - | AAB |
| 161 | Nia bang                | 3x       | + | + | - | AAB |
| 162 | Niangfeloa              | 3x       | + | + | - | AAB |
| 163 | Nothing but red         | 3x       | + | + | - | AAB |
| 164 | Nselouka                | 3x       | + | + | - | AAB |
| 165 | Ntanga 3                | 3x       | + | + | - | AAB |
| 166 | O. Ntanga 2             | 3x       | + | + | - | AAB |
| 167 | O. Ntanga G.M.          | 3x       | + | + | - | AAB |
| 168 | Obibit Ukom             | 3x       | + | + | - | AAB |
| 169 | Obino L'Ewai            | 3x       | + | + | - | AAB |
| 170 | Okoyo Ukom              | 3x       | + | + | - | AAB |
| 171 | Orishele                | 3x       | + | + | - | AAB |
| 172 | Osoaboaso               | 3x       | + | + | - | AAB |
| 173 | Ovang                   | 3x       | + | + | - | AAB |
| 174 | Pisang ceylan           | 3x       | + | + | - | AAB |
| 175 | Pisang kelat            | 3x       | + | + | - | AAB |
| 176 | Pisang lang             | 3x       | + | + | - | AAB |
| 177 | Platano H. 645          | 3x       | + | + | - | AAB |
| 178 | Pome                    | 3x       | + | + | - | AAB |
| 179 | Popoulou                | 3x       | + | + | - | AAB |
| 180 | Poyo                    | 3x       | + | + | - | AAB |
| 181 | Purple plantain         | 3x       | + | + | - | AAB |
| 182 | Rajapuri India          | 3x       | + | + | - | AAB |
| 183 | Red Plantain            | 3x       | + | + | - | AAB |
| 184 | Red Plantain Hembra     | 3x       | + | + | - | AAB |
| 185 | Rouge Deloum            | 3x       | + | + | - | AAB |
| 186 | Silk                    | 3x       | + | + | - | AAB |
| 187 | Sukali ndizi            | 2x (3x)* | + | + |   | AAB |
| 188 | Topala                  | 2x (3x)* | + | + | - | AAB |
| 189 | Trumay                  | 3x       | + | + | - | AAB |
| 190 | Tsambunu                | 3x       | + | + | - | AAB |

**Table 1.** contd.

|     |                      |         |   |   |   |      |
|-----|----------------------|---------|---|---|---|------|
| 191 | Ubok Iba             | 3x      | + | + | - | AAB  |
| 192 | Ukom                 | 3x      | + | + | - | AAB  |
| 193 | Valery               | 3x      | + | - | - | AAA  |
| 194 | Walungu 8            | 3x      | + | + | - | AAB  |
| 195 | Wine Plantain        | 3x      | + | + | - | AAB  |
| 196 | Zue Ekon             | 3x      | + | + | - | AAB  |
| 197 | Foulah 4             | 3x (4x) | + | + | + | AABB |
| 198 | Nzizi                | 3x (4x) | + | + | + | AABB |
| 199 | Pisang awak          | 3x (4x) | + | + | + | AABB |
| 200 | Ney Poovan           | 2x      | + | + | - | AB   |
| 201 | Blue Torres strait 1 | 3x      | + | + | + | ABB  |
| 202 | Bluggoe              | 3x      | + | + | + | ABB  |
| 203 | Cachaco              | 3x      | + | + | + | ABB  |
| 204 | Cardaba              | 3x      | + | + | + | ABB  |
| 205 | Dole 767             | 3x      | + | + | + | ABB  |
| 206 | Fougamou             | 3x      | + | + | + | ABB  |
| 207 | Green Red            | 3x      | + | + | + | ABB  |
| 208 | Ice Cream            | 3x      | + | + | + | ABB  |
| 209 | Lep Chang Kut        | 3x      | + | + | + | ABB  |
| 210 | Maduranga            | 3x      | + | + | + | ABB  |
| 211 | Pisang raja          | 3x      | + | + | + | ABB  |
| 212 | Pelipita             | 3x      | + | + | + | ABB  |
| 213 | Robusta 133          | 3x      | + | + | + | ABB  |
| 214 | Sabra                | 3x      | + | + | + | ABB  |
| 215 | Simili Radjah        | 3x      | + | + | + | ABB  |



**Figure 1.** Representative histograms from ploidy analysis of *Musa* accessions. The figure shows peaks at channels 50 and 100 representing a diploid and tetraploid ploidy level.



**Figure 2.** Mitotic metaphase plates showing 44 chromosomes in “Nzizi” (a) and 33 chromosomes in ‘Too’ (b) and ‘Toowoolee’ (c).

by different cytotypes. This can only be confirmed by looking at a large number of accessions from the whole geographical range of these genotypes.

It has been previously demonstrated that total reliance on morphology alone could produce ambiguous results with regards to ploidy in *Musa* (Jenny et al., 1997; Horry et al., 1998). For example, Klue Teparot (ABBB) that was known as a natural tetraploid was found to be a triploid with flow cytometry and conventional chromosome counting (Jenny et al., 1997; Horry et al., 1998). Its genome composition was determined to be ABB (Pillay et al., 2000). Similarly, Horry et al. (1998) showed that the accessions ‘Balonkawe’ and ‘Pisang Jambe’ previously classified as tetraploids from their morphology were shown to be triploids while ‘Kluai Ngoen’ described as a triploid (Chomchalow and Silayoi, 1984) was reclassified as a tetraploid.

Banana improvement programs throughout the world operate on similar basic principles, although the end products of breeding may differ. This involves (i) diploid x

diploid crosses and phenotypic selection to identify elite diploid parents, and (ii) triploid x diploid crosses to produce primary tetraploids initially, and then crossing these tetraploids with diploids to produce secondary triploids (see Figure 1; Pillay et al., 2001). While this scheme appears to be fairly straightforward and simple, there are a number of confounding factors. For example, many banana genotypes are known to produce  $2n$  gametes (Ortiz, 1997). Consequently a diploid x diploid cross may not necessarily produce all diploid progeny. We have observed triploid progeny resulting from diploid x diploid crosses in *Musa* (unpublished data). Triploid by diploid crosses can produce diploids, triploids and tetraploids and in rare case pentaploids. Osuji et al. (1997) have reported aneuploids in  $3x \times 2x$  crosses in *Musa*. Banana breeding programs should consider these anomalies and routinely examine the ploidy of all plants in segregating populations to ascertain the correct ploidy of selections.

Ten major banana genomic groups are recognized in use today (Stover and Simmonds, 1987; Robinson, 1996). These include (i) AA, (ii) AAA, (iii) AAAA, (iv) AB, (v) AAB, (vi) ABB, (vii) BBB and (viii) ABBB, (ix) AAAB and (x) AABB. Bananas are classified into distinct types on the basis of their genome groups. Generally, dessert bananas and east African highland bananas are AAA, plantains are AAB while cooking bananas are ABB. Interploidy crosses between heterogenomic parents can produce an array of genotypes. For example, crosses between a plantain (AAB) and a wild diploid AA or BB parent produces progeny varying in ploidy and genome composition. These genotypes cannot be easily distinguished from morphology. Correct information on the genome composition and ploidy of parental material is essential so that the *Musa* breeder could make appropriate selections

The IITA germplasm collection was established primarily from *in vitro* propagules (Vuylsteke and Swennen, 1992). While *in vitro* material is advantageous for germplasm exchange especially in the case of banana where conventional propagules are bulky, it also has disadvantages (Daniells, 1997). One of the main problems emanating from tissue culture laboratories are variety mix-ups and miss-labeling (Daniells, 1997). Different banana varieties look similar at the test tube stage. Ploidy analysis and genome composition data are useful in identifying such mix-ups. For example the east African highland banana cultivar ‘Rugondo’ is classified as a triploid. Ploidy analysis of ‘Rugondo’ from our germplasm collection produced a peak at channel 50 suggesting that it was diploid. However, leaf samples collected from the same cultivar from Uganda showed that it was a triploid with an AAA genome composition. This example underscores the value of ploidy analysis and genome composition in *Musa*. *In vitro* culture is also widely used for rapid multiplication of plants in *Musa* breeding programs. Therefore the disadvantages of



somaclonal variation, especially on ploidy, must be considered. While ploidy analyzers are not sensitive enough to detect aneuploidy in banana, more drastic ploidy changes are easily discernible. Ploidy analysis should become an integral part of any banana breeding program.

In conclusion, our study showed that flow cytometry in combination with our genome marker system is an invaluable tool in *Musa* breeding.

## ACKNOWLEDGEMENTS

This research was supported, in part, by the Belgian Agency for Development Corporation (BADC, now DGIC).

## REFERENCES

- Crouch HK, Crouch JH, Jarret RL, Cregan PB, Ortiz R (1998). Segregation of microsatellite loci in haploid and diploid gametes of *Musa*. *Crop Sci.* 38: 211-217.
- Daniells J (1997) Beware the potential hazards of tissue culture. *InfoMusa* 6: 17-18.
- Dolezel J, Dolezelova M, Novak FJ (1994). Flow cytometric estimation of nuclear DNA amounts in diploid bananas (*Musa acuminata* and *M. balbisiana*) *Biologia Plantarum* 36: 351-357.
- Dolezelova M, Valarik M, Swennen R, Horry JP, Dolezel J (1998). Physical mapping of the 18S-25S and 5S ribosomal RNA genes in diploid bananas. *Biologia Plantarum* 41: 479-505.
- Horry J-P, Dolezel J, Dolezelova M, Lysak M A (1998). Do natural A x B tetraploid bananas exist? *InfoMusa* 7: 5-6.
- Karamura DA (1998). Numerical taxonomic studies of the East African highland bananas (*Musa* AAA-East Africa) in Uganda. INIBAP, France. p. 192.
- Le Dinh Danh, Ho Huu Nhi, Valmayor RV (1998). Banana collection, characterization and conservation in Vietnam. *Infomusa* 7: 10-13.
- Lysak M, Dolezelova M, Dolezel J (1998). Flow cytometric analysis of nuclear genome size in *Musa* spp. In: Maluszynska J (ed). *Plant Cytogenetics*. Wydawnictwo Uniwersytetu, Slaskiego, Katowice, Czech Republic. pp. 178-183.
- Nwakanma DC, Pillay M, Okoli BE, Tenkouano A (2003). PCR-RFLP of the ribosomal DNA internal transcribed spacers (ITS) provides markers for the A and B genomes in *Musa* L. *Theor. Appl. Genet.* 108: 154-159.
- Ortiz R (1997). Morphological variation in *Musa* germplasm. *Genet. Resour. Crop Evol.* 44: 393-404.
- Ortiz R (1997). Occurrence and inheritance of 2n pollen in *Musa*. *Ann. Bot.* 79: 449-453.
- Ortiz R, Madsen S, Vuylsteke D (1998). Classification of African plantain landraces and banana cultivars using a phenotypic distance index of quantitative descriptors. *Theor. Appl. Genet.* 96: 904-911.
- Osuji JO, Vuylsteke D, Ortiz R (1997). Ploidy variation in hybrids from interplod 3x X 2x crosses in *Musa*. *Tropicultura* 15: 37-39.
- Pillay M, Nwakanma DC, Tenkouano A (2000). Identification of RAPD markers linked to A and B genome sequences in *Musa*. *Genome* 43: 763-767.
- Pillay M, Adeleke MTV (2001). Silver staining of *Musa* chromosomes. *Cytologia* 66: 33-37.
- Pillay M, Tenkouano A, Hartman (2001). Future challenges in *Musa* breeding. In: Kang MS (ed) *Crop improvement for the 21<sup>st</sup> century*. Food Prod. Press, New York. pp. 223-252.
- Richardson DL, Hamilton KS, Hutchinson DJ (1965) Notes on banana. 1- Natural edible tetraploids. *Trop. Agric. Trinidad* 42: 125-137
- Sebasigari K (1987). Morphological taxonomy of *Musa* in eastern Africa. In: Persley GJ, De Langhe EA (Eds) *Banana and plantain breeding strategies: ACIAR proceedings 21*, ACIAR, Canberra, pp.173-176.
- Shepherd K (1957). Banana cultivars in East Africa. *Trop. Agric. Trinidad* 34(4): 277-286.
- Shepherd K (1999). Cytogenetics of the genus *Musa*. International network for the improvement of banana and plantain, Montpellier, France. p. 154.
- Simmonds NW (1966). *Bananas*. 2<sup>nd</sup> edition. Longman, London.
- Simmonds NW, Shepherd K (1955). The taxonomy and origins of the cultivated bananas. *J. Linn. Soc. Lond. Bot.* 55: 302-312.
- Stover RH, Simmonds NW (1987). *Bananas*. 3<sup>rd</sup> edition. Longman Scientific and Technical, Essex, England. p.468.
- Swennen R (1990). *Plantain cultivation under West African conditions: a reference manual*. IITA, Ibadan, Nigeria. p.24.
- Swennen R, Vuylsteke D, Ortiz R (1995). Phenotypic diversity and patterns of variation in West and Central African plantains. *Econ. Bot.* 49: 320-327.
- Vandenhout H, Ortiz R, Vuylsteke D, Swennen R, Bai KV (1998). Effects of ploidy on stomatal and other quantitative traits in plantain and banana hybrids. *Euphytica* 83: 117-122.
- Van Duren M., Morpurgo R, Dolezel J, Afza R (1996). Induction and verification of tetraploids in diploid banana (*Musa acuminata*) by *in vitro* techniques. *Euphytica* 88: 25-34.
- Vuylsteke DR, Swennen R, Ortiz R (1993). Development and performance of black Sigatoka-resistant tetraploid hybrids of plantain (*Musa* spp., AAB group). *Euphytica* 65: 33-42.
- Vuylsteke D, Schoofs J, Swennen R, Adejare G, Ayodele M, De Langhe E (1990). Shoot-tip culture and third country quarantine to facilitate the introduction of new *Musa* germplasm into West Africa. *FAO/IBPGR. Plant Genet. Resour. Newslett.* 81/82: 5-11.
- Vuylsteke D, Swennen R (1992). Biotechnological approaches to plantain and banana improvement at IITA. In: Thottappilly G L Monti DR, Mohan Raj, Moore AW (eds). *Biotechnology: Enhancing research on tropical crops in Africa*. CTA/IITA co-publication. IITA, Ibadan, Nigeria. p. 376.